

# MIXL1 antibody



Catalog Number: 112663

## Product name

MIXL1 antibody

## Specificity

Human, Rat; other species not tested.

## Antibody description

MIXL1 Rabbit Polyclonal antibody. Positive WB detected in HEK-293 cells, H7ES cells, rat pancreas tissue. Observed molecular weight by Western-blot: 20 kDa

## Preparation

This antibody was obtained by immunization of MIXL1 recombinant protein (Accession Number: NM\_031944). Purification method: Antigen Affinity purified.

## Formulation

PBS with 0.02% sodium azide and 50% glycerol pH 7.3.

## Storage

Store at -20°C. DO NOT ALIQUOT

## Clonality

Polyclonal

## Ig Type

Rabbit IgG

## Applications

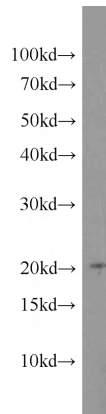
ELISA, WB

## Dilutions

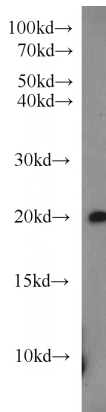
Recommended Dilution:

WB: 1:500-1:5000

## Validations



HEK-293 cells were subjected to SDS PAGE followed by western blot with Catalog No:112663(MIXL1 antibody) at dilution of 1:1000



rat pancreas tissue were subjected to SDS PAGE followed by western blot with Catalog No:112663(MIXL1 antibody) at dilution of 1:500