

# CCDC12 antibody



Catalog Number: 108963

## Product name

Polyclonal

CCDC12 antibody

## Ig Type

## Specificity

Rabbit IgG

Human; other species not tested.

## Applications

## Antibody description

ELISA, WB, IP

CCDC12 Rabbit Polyclonal antibody. Positive WB detected in HeLa cells, Raji cells. Observed molecular weight by Western-blot: 18-25 kDa

## Dilutions

Recommended Dilution:

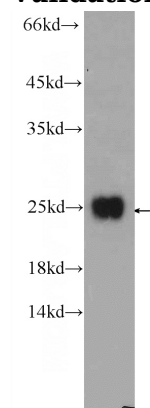
## Preparation

WB: 1:200-1:2000

This antibody was obtained by immunization of CCDC12 recombinant protein (Accession Number: NM\_001277074). Purification method: Antigen affinity purified.

## Validations

## Formulation



PBS with 0.1% sodium azide and 50% glycerol pH 7.3.

## Storage

Store at -20°C. DO NOT ALIQUOT

HeLa cells were subjected to SDS PAGE followed by western blot with Catalog No:108963(CCDC12 Antibody) at dilution of 1:600

## Clonality