

Anti-PMS2 Rabbit antibody



Catalog Number: 168963

Product name

Anti-PMS2 Rabbit antibody

Specificity

Human

Antibody description

PMS2 Rabbit monoclonal antibody

Preparation

Antigen: A synthetic peptide of human PMS2

Formulation

Supplied in 50nM Tris-Glycine(pH 7.4), 0.15M NaCl, 40%Glycerol, 0.01% sodium azide and 0.05% BSA.

Storage

Store at 4°C short term. Aliquot and store at -20°C long term. Avoid freeze / thaw cycle.

Clonality

Monoclonal

Ig Type

Rabbit IgG

Applications

WB, ICC/IF, FC, IP

Dilutions

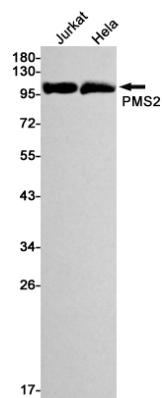
WB: 1/2000

ICC/IF: 1/50

FC: 1/100

IP: 1/20

Validations



Western blot detection of PMS2 in Jurkat, HeLa cell lysates using PMS2 Rabbit mAb(1:1000 diluted). Predicted band size: 96kDa. Observed band size: 96kDa.