

# ALDH1B1 antibody



Catalog Number: 107963

## Product name

ALDH1B1 antibody

IP: 1:200-1:2000

IHC: 1:20-1:200

## Specificity

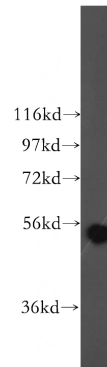
Human, Mouse, Rat; other species not tested.

IF: 1:20-1:200

## Validations

## Antibody description

ALDH1B1 Rabbit Polyclonal antibody. Positive IF detected in HepG2 cells. Positive IHC detected in human testis tissue. Positive IP detected in mouse brain tissue. Positive WB detected in HepG2 cells, mouse brain tissue. Observed molecular weight by Western-blot: 55 kDa



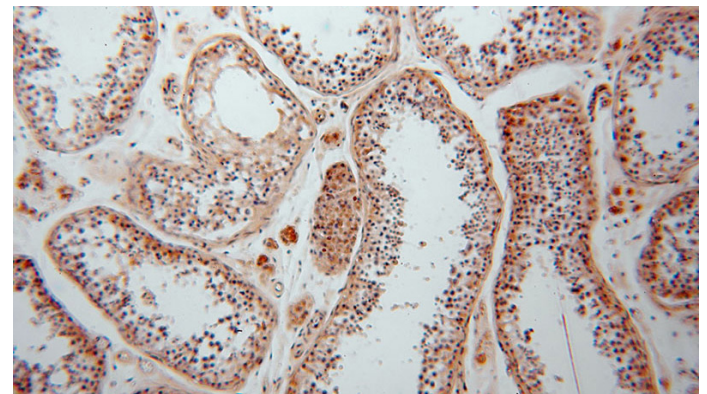
## Preparation

This antibody was obtained by immunization of ALDH1B1 recombinant protein (Accession Number: NM\_000692). Purification method: Antigen affinity purified.

HepG2 cells were subjected to SDS PAGE followed by western blot with Catalog No:107963(ALDH1B1 antibody) at dilution of 1:500

## Formulation

PBS with 0.02% sodium azide and 50% glycerol pH 7.3.



## Storage

Store at -20°C. DO NOT ALIQUOT

## Clonality

Polyclonal

## Ig Type

Rabbit IgG

## Applications

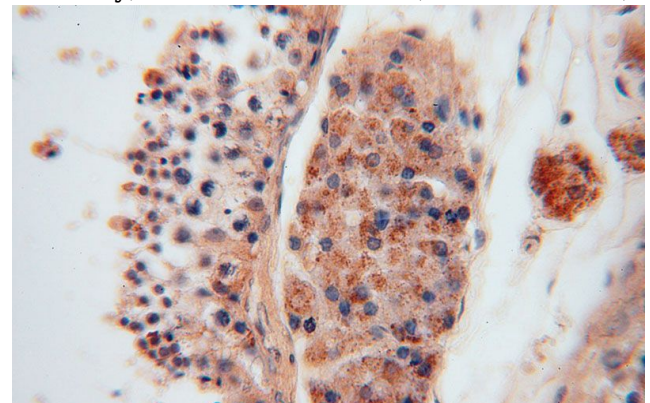
ELISA, WB, IHC, IP, IF

## Dilutions

Recommended Dilution:

WB: 1:500-1:5000

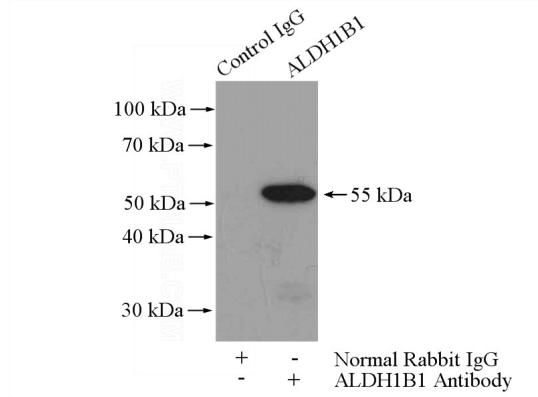
Immunohistochemical of paraffin-embedded human testis using Catalog No:107963(ALDH1B1 antibody) at dilution of 1:100 (under 10x lens)



# ALDH1B1 antibody

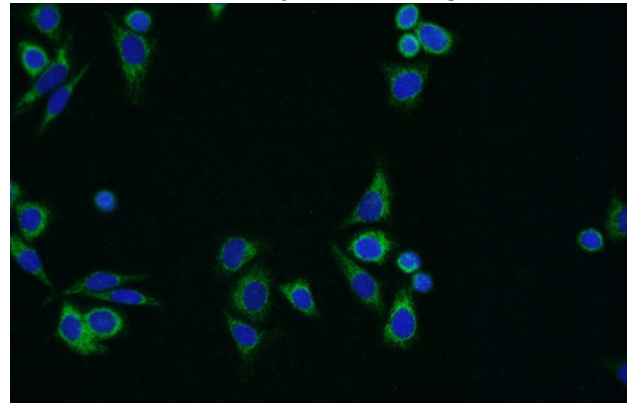
Catalog Number: 107963

Immunohistochemical of paraffin-embedded human testis using Catalog No:107963(ALDH1B1 antibody) at dilution of 1:100 (under 40x lens)



IP Result of anti-ALDH1B1 (IP:Catalog No:107963, 4ug; Detection:Catalog No:107963 1:500) with

mouse brain tissue lysate 4000ug.



Immunofluorescent analysis of HepG2 cells using Catalog No:107963(ALDH1B1 Antibody) at dilution of 1:50 and Alexa Fluor 488-conjugated AffiniPure Goat Anti-Rabbit IgG(H+L)