

IER3 Polyclonal Antibody

Catalog Number: 165963

Product name

IER3 Polyclonal Antibody

Specificity

Human, Mouse

Antibody description

Polyclonal antibody to IER3

Preparation

Antigen: A synthetic peptide corresponding to a sequence within amino acids 50 to the C-terminus of human IER3 (NP_003888.2).

Formulation

PBS with 0.02% sodium azide, 50% glycerol, pH7.3.

Storage

Store at -20°C. Avoid freeze / thaw cycles.

Clonality

Polyclonal

Ig Type

Rabbit IgG

Applications

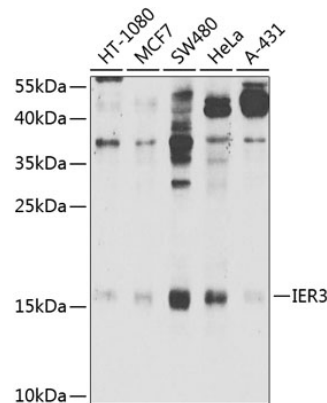
WB, IHC

Dilutions

WB 1:500 - 1:2000

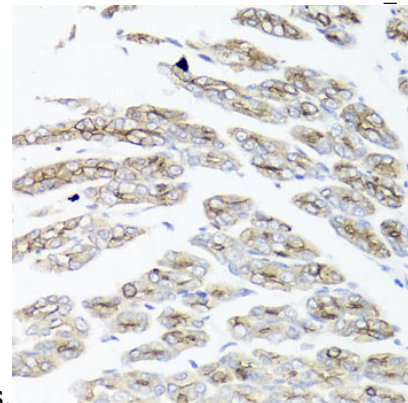
IHC 1:50 - 1:100

Validations



Western blot - IER3 Polyclonal Antibody

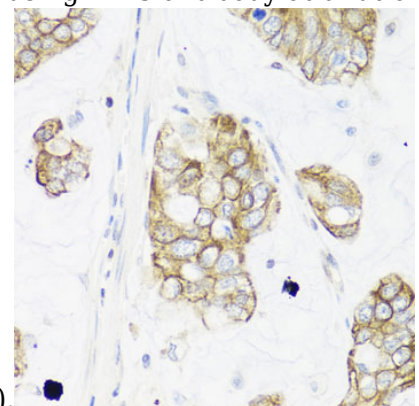
Western blot analysis of extracts of various cell lines, using IER3 Antibody at 1:1000 dilution. Secondary antibody: HRP Goat Anti-Rabbit IgG (H+L) at 1:10000 dilution. Lysates/proteins: 25ug per lane. Blocking buffer: 3% nonfat dry milk in TBST. Detection: ECL Enhanced Kit. Exposure



time: 90s.

Immunohistochemistry - IER3 Polyclonal Antibody

Immunohistochemistry of paraffin-embedded mouse stomach using IER3 antibody at dilution of



1:100 (40x lens).

IER3 Polyclonal Antibody



Catalog Number: 165963

Immunohistochemistry - IER3 Polyclonal Antibody

human gastric cancer using IER3 antibody at dilution of 1:100 (40x lens).

Immunohistochemistry of paraffin-embedded