

Spermine synthase antibody



Catalog Number: 115563

Product name

Spermine synthase antibody

Specificity

Human, Mouse, Rat; other species not tested.

Antibody description

Spermine synthase Rabbit Polyclonal antibody.
Positive WB detected in human heart tissue.
Observed molecular weight by Western-blot: 41kd

Preparation

This antibody was obtained by immunization of Spermine synthase recombinant protein (Accession Number: NM_004595). Purification method: Antigen affinity purified.

Formulation

PBS with 0.02% sodium azide and 50% glycerol pH 7.3.

Storage

Store at -20°C. DO NOT ALIQUOT

Clonality

Polyclonal

Ig Type

Rabbit IgG

Applications

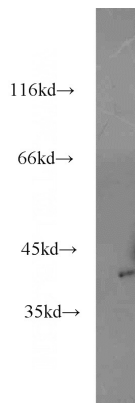
ELISA, WB

Dilutions

Recommended Dilution:

WB: 1:200-1:2000

Validations



human heart tissue were subjected to SDS PAGE followed by western blot with Catalog No:115563(SMS antibody) at dilution of 1:800