

# MCT4 antibody

Catalog Number: 112563

## Product name

MCT4 antibody

WB: 1:500-1:5000

IHC: 1:20-1:200

## Specificity

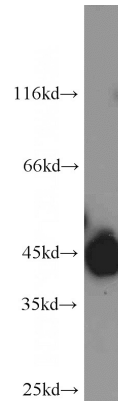
Human; other species not tested.

IF: 1:20-1:200

## Antibody description

MCT4 Rabbit Polyclonal antibody. Positive WB detected in HeLa cells. Positive FC detected in HepG2 cells. Positive IF detected in HepG2 cells. Positive IHC detected in human breast cancer tissue, human prostate cancer tissue, human skeletal muscle tissue. Observed molecular weight by Western-blot: 42-45 kDa

## Validations



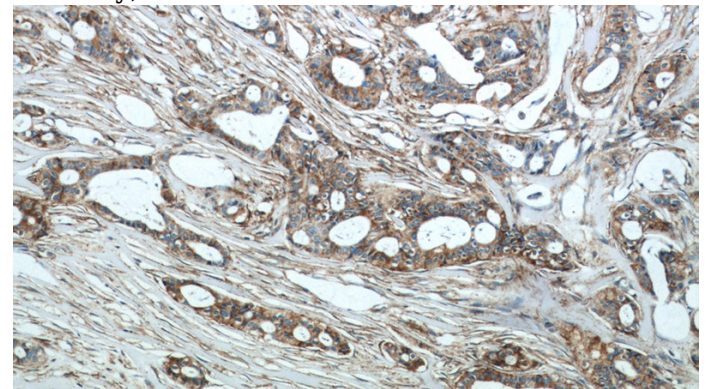
## Preparation

This antibody was obtained by immunization of MCT4 recombinant protein (Accession Number: NM\_001206951). Purification method: Antigen affinity purified.

HeLa cells were subjected to SDS PAGE followed by western blot with Catalog No:112563(SLC16A3 antibody) at dilution of 1:1000

## Formulation

PBS with 0.02% sodium azide and 50% glycerol pH 7.3.



## Storage

Store at -20°C. DO NOT ALIQUOT

## Clonality

Polyclonal

Immunohistochemical of paraffin-embedded human breast cancer using Catalog No:112563(SLC16A3 antibody) at dilution of 1:50 (under 10x lens)

## Ig Type

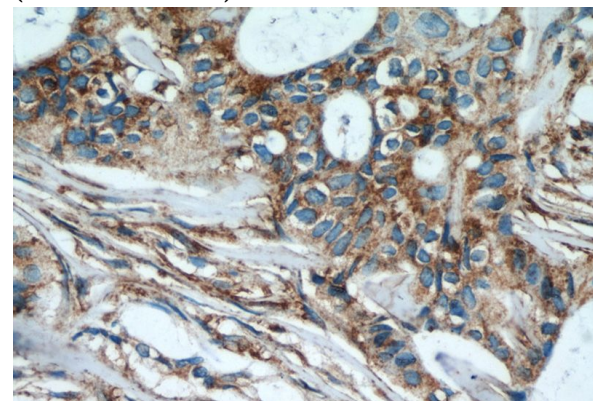
Rabbit IgG

## Applications

ELISA, WB, IHC, IF, FC

## Dilutions

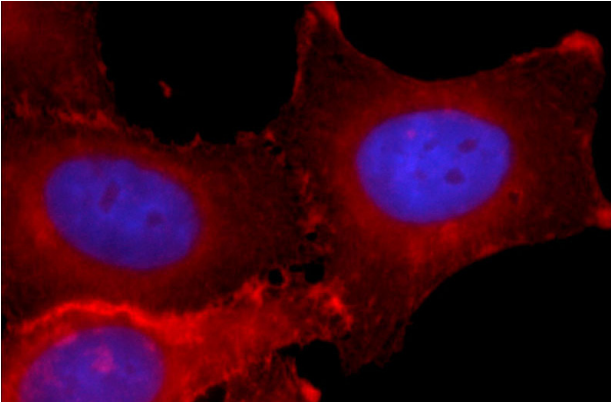
Recommended Dilution:



# MCT4 antibody

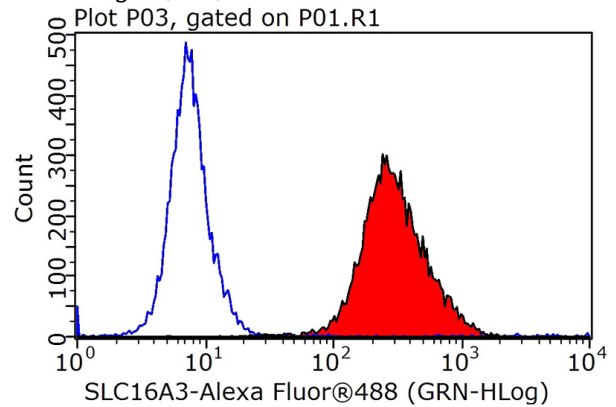
Catalog Number: 112563

Immunohistochemical of paraffin-embedded human breast cancer using Catalog No:112563(SLC16A3 antibody) at dilution of 1:50 (under 40x lens)



Immunofluorescent analysis of HepG2 cells using Catalog No:112563 (SLC16A3 Antibody) at dilution of 1:50 and Rhodamine-labeled goat anti-

rabbit IgG (red).



1X10<sup>6</sup> HepG2 cells were stained with 0.2ug SLC16A3 antibody (Catalog No:112563, red) and control antibody (blue). Fixed with 90% MeOH blocked with 3% BSA (30 min). Alexa Fluor 488-conjugated AffiniPure Goat Anti-Rabbit IgG(H+L) with dilution 1:1000.