

CLTB antibody



Catalog Number: 107163

Product name

CLTB antibody

Immunogen

[Human CLTB Recombinant protein \(His tag\)](#)

Specificity

Human, Pig; other species not tested.

Antibody description

CLTB Mouse Monoclonal antibody. Positive WB detected in pig brain tissue. Positive IF detected in HeLa cells. Positive IHC detected in human liver tissue, human kidney tissue. Observed molecular weight by Western-blot: 32-38 kDa

Preparation

This antibody was obtained by immunization of CLTB recombinant protein (Accession Number: NM_001834). Purification method: Protein G purified.

Formulation

PBS with 0.02% sodium azide and 50% glycerol pH 7.3.

Storage

Store at -20°C. DO NOT ALIQUOT

Clonality

Monoclonal

Ig Type

Mouse IgG1

Applications

ELISA, WB, IF, IHC

Dilutions

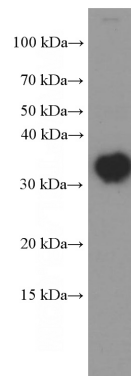
Recommended Dilution:

WB: 1:500-1:5000

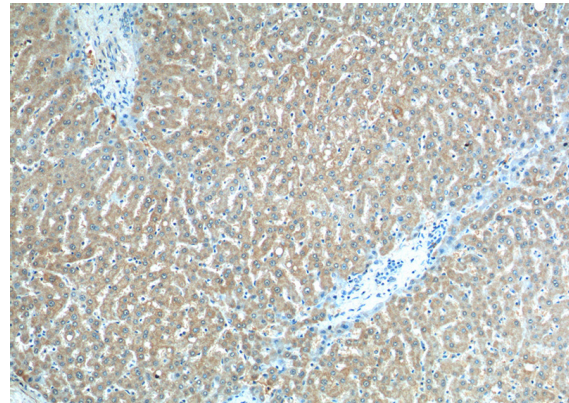
IHC: 1:50-1:500

IF: 1:50-1:500

Validations



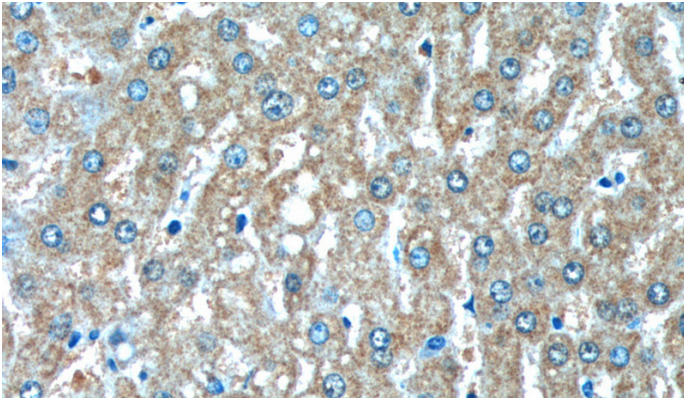
pig brain tissue were subjected to SDS PAGE followed by western blot with (CLTB Antibody) at dilution of 1:2000



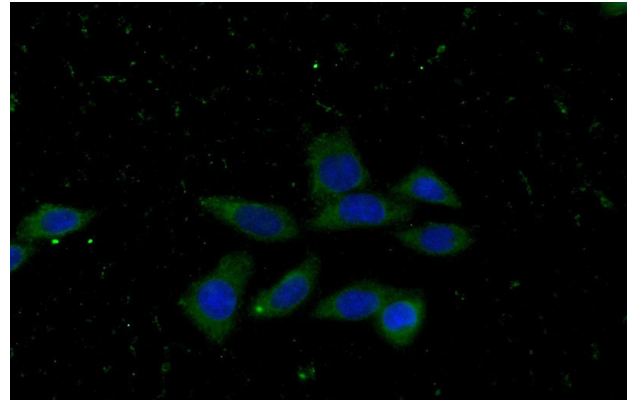
Immunohistochemistry of paraffin-embedded human liver tissue slide using Catalog No:107163(CLTB Antibody) at dilution of 1:200 (under 10x lens).

CLTB antibody

Catalog Number: 107163



Immunohistochemistry of paraffin-embedded human liver tissue slide using Catalog No:107163 (CLTB Antibody) at dilution of 1:200 (under 40x lens).



Immunofluorescent analysis of (-20oc Ethanol) fixed HeLa cells using Catalog No:107163 (CLTB Antibody) at dilution of 1:100 and Alexa Fluor 488-conjugated AffiniPure Goat Anti-Mouse IgG(H+L)