

Anti-PDGFR beta Rabbit antibody



Catalog Number: 167163

Product name

Rabbit IgG

Anti-PDGFR beta Rabbit antibody

Applications

Specificity

WB, ICC/IF, FC, IP

Human, Mouse, Rat

Dilutions

Antibody description

WB: 1/1000

PDGFR beta Rabbit polyclonal antibody

ICC/IF: 1/20

Preparation

FC: 1/20

Antigen: A synthetic peptide of human PDGFR beta

IP: 1/20

Validations

Formulation

Supplied in 50nM Tris-Glycine(pH 7.4), 0.15M NaCl, 40%Glycerol, 0.01% sodium azide and 0.05% BSA.

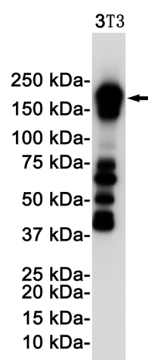
Storage

Store at -20°C. Stable for 12 months from date of receipt.

Clonality

Polyclonal

Ig Type



Western blot detection of PDGFR beta in 3T3 cell lysates using PDGFR beta Rabbit pAb(1:1000 diluted). Predicted band size: 124KDa. Observed band size: 190KDa.