

TOB1 antibody

Catalog Number: 116163

Product name

TOB1 antibody

IP: 1:500-1:5000

IHC: 1:20-1:200

Specificity

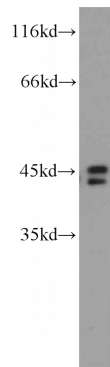
Human, Mouse, Rat; other species not tested.

IF: 1:10-1:100

Antibody description


TOB1 Rabbit Polyclonal antibody. Positive IHC detected in human stomach tissue, human breast cancer tissue. Positive IF detected in HeLa cells. Positive IP detected in HeLa cells. Positive WB detected in HeLa cells. Observed molecular weight by Western-blot: 38-45 kDa

Validations



Preparation

This antibody was obtained by immunization of TOB1 recombinant protein (Accession Number: NM_001243877). Purification method: Antigen affinity purified.

HeLa cells were subjected to SDS PAGE followed by western blot with Catalog No:116163(TOB1 antibody) at dilution of 1:1000 

Formulation

PBS with 0.1% sodium azide and 50% glycerol pH 7.3.

Immunohistochemical of paraffin-embedded human stomach using Catalog No:116163(TOB1 antibody) at dilution of 1:50 (under 10x lens)

Storage

Store at -20°C. DO NOT ALIQUOT

Clonality

Polyclonal

Ig Type

Rabbit IgG

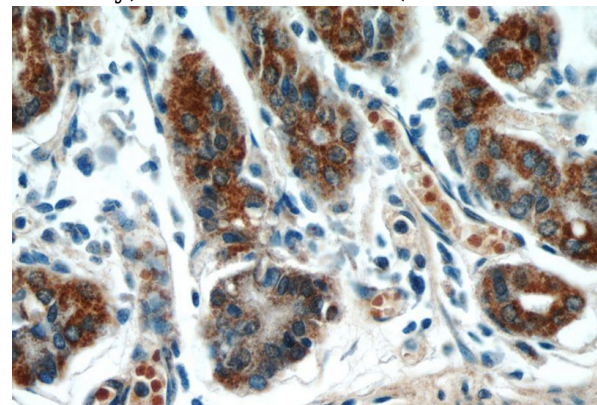
Applications

ELISA, WB, IHC, IF, IP

Dilutions

Recommended Dilution:

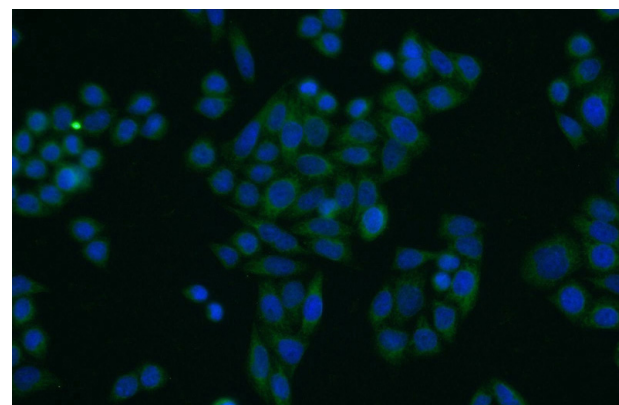
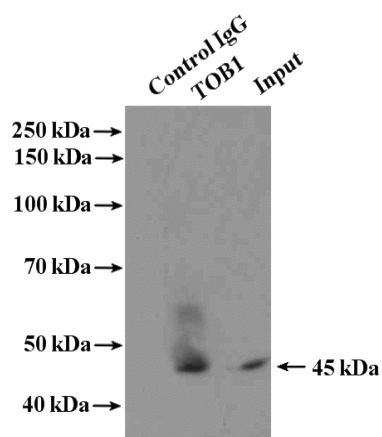
WB: 1:500-1:5000



Immunohistochemical of paraffin-embedded human stomach using Catalog No:116163(TOB1 antibody) at dilution of 1:50 (under 40x lens)

TOB1 antibody

Catalog Number: 116163



IP Result of anti-TOB1 (IP:Catalog No:116163, 4ug; Detection:Catalog No:116163 1:1000) with HeLa cells lysate 1600ug.

Immunofluorescent analysis of HeLa cells using Catalog No:116163(TOB1 Antibody) at dilution of 1:25 and Alexa Fluor 488-conjugated AffiniPure Goat Anti-Rabbit IgG(H+L)