

**Product name**

Anti- antibody

**Specificity**

Arabidopsis thaliana

**Antibody description**

Rabbit polyclonal antibody to

**Preparation**

This antigen of this antibody was c-terminal a. thaliana ap-4 complex subunit epsilon.

**Formulation**

Liquid, 1\*PBS (pH7.4), 0.2% BSA, 50% Glycerol.  
Preservative: 0.05% Sodium Azide.

**Storage**

Store at +4°C after thawing. Aliquot store at -20°C. Avoid repeated freeze / thaw cycles.

**Clonality**

Polyclonal

**Ig Type**

Rabbit IgG

**Applications**

IF, IHC-P, ELISA

**Dilutions**

IF:1:50-1:100

IHC-P:1:50-1:200

ELISA:1:10,000-1:20,000

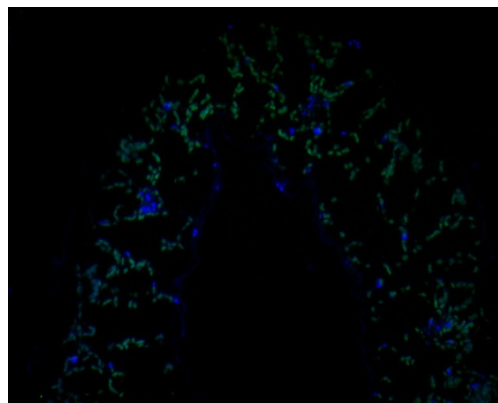
**Validations**

Fig1:: Immunofluorescence staining of paraffin-embedded A. thaliana tissue using anti-AP-4 complex subunit epsilon antibody. The section was pre-treated using heat mediated antigen retrieval with Tris-EDTA buffer (pH 9.0) for 20 minutes. The tissues were blocked in 10% negative goat serum for 1 hour at room temperature, washed with PBS, and then probed with 175163# at 1/50 dilution for 10 hours at 4°C and detected using Alexa Fluor® 488 conjugate-Goat anti-Rabbit IgG (H+L) Secondary Antibody at a dilution of 1:500 for 1 hour at room temperature.

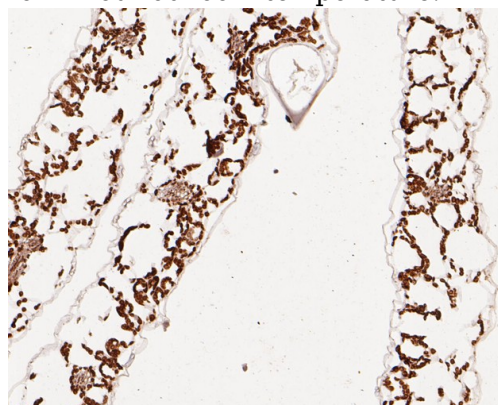


Fig2:: Immunohistochemical analysis of paraffin-embedded A. thaliana tissue using anti-AP-4 complex subunit epsilon antibody. The section was pre-treated using heat mediated antigen retrieval with Tris-EDTA buffer (pH 8.0-8.4) for 20 minutes. The tissues were blocked in 5% BSA for 30 minutes at room temperature, washed with ddH<sub>2</sub>O and PBS, and then probed with the primary antibody (1/50) for 30 minutes at room temperature. The detection was performed using an HRP conjugated compact polymer system. DAB was used as the chromogen. Tissues were

counterstained with hematoxylin and mounted

with DPX.