

Anti-Activin A Receptor Type IB Rabbit antibody



Catalog Number: 168863

Product name

Anti-Activin A Receptor Type IB Rabbit antibody

Ig Type

Rabbit IgG

Specificity

Human, Mouse, Rat

Applications

WB, FC

Antibody description

Activin A Receptor Type IB Rabbit monoclonal antibody

Dilutions

1:2000-1:10000

1:20

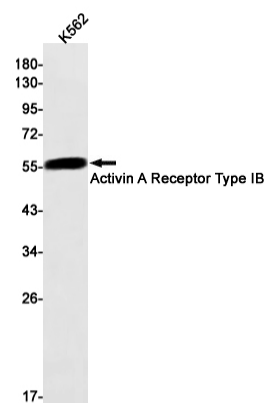
Preparation

Antigen: A synthetic peptide of human Activin A Receptor Type IB

Validations

Formulation

Supplied in 50nM Tris-Glycine(pH 7.4), 0.15M NaCl, 40%Glycerol, 0.01% sodium azide and 0.05% BSA.



Storage

Store at 4°C short term. Aliquot and store at -20°C long term. Avoid freeze / thaw cycle.

Clonality

Monoclonal

Western blot detection of Activin A Receptor Type IB in K562 cell lysates using Activin A Receptor Type IB Rabbit mAb(1:1000 diluted).Predicted band size:57kDa.Observed band size:57kDa.