

Anti-CYP2D6 Rabbit antibody



Catalog Number: 167863

Product name

Anti-CYP2D6 Rabbit antibody

Specificity

Human

Antibody description

CYP2D6 Rabbit monoclonal antibody

Preparation

Antigen: Recombinant protein of human CYP2D6

Formulation

50nM Tris-Glycine(pH 7.4), 0.15M NaCl,
40%Glycerol, 0.01% sodium azide and 0.05% BSA

Storage

Store at 4°C short term. Store at -20°C long term.
Avoid freeze / thaw cycle.

Clonality

Monoclonal

Ig Type

Rabbit IgG

Applications

WB, IHC-P, ICC/IF, FC

Dilutions

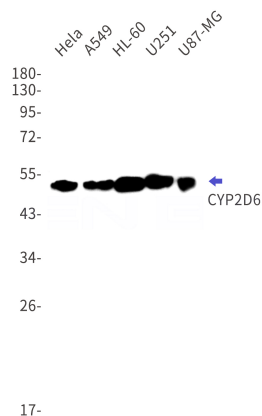
WB: 1/1000

IHC: 1/100

ICC/IF: 1/200

FC: 1/50

Validations



Western blot detection of CYP2D6 in HeLa, A549, HL-60, U251, U87-MG cell lysates using CYP2D6 Rabbit mAb(1:1000 diluted). Predicted band size: 56kDa. Observed band size: 50kDa.