

# Anti-Histone H3 Rabbit antibody



Catalog Number: 167463

## Product name

Anti-Histone H3 Rabbit antibody

ICC/IF: 1/1000-1/2000

IP: 1/50

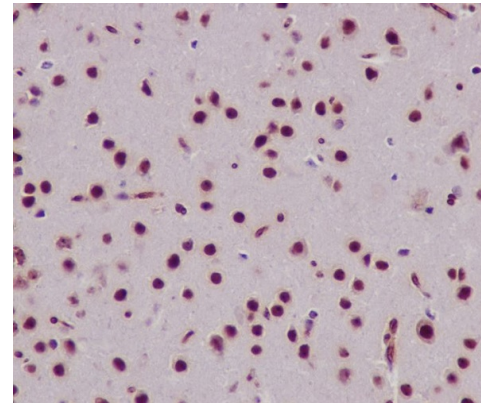
## Specificity

Human, Mouse, Rat

## Validations

## Antibody description

Histone H3 Rabbit polyclonal antibody



## Preparation

Antigen: A synthesized peptide derived from human Histone H3

Immunohistochemical analysis of paraffin-embedded mouse brain, using Histone H3 Antibody.

## Formulation

Rabbit IgG in phosphate buffered saline , pH 7.4, 150mM NaCl, 0.02% sodium azide and 50% glycerol.

## Storage

Store at 4°C short term. Store at -20°C long term. Avoid freeze / thaw cycle.

## Clonality

Polyclonal

## Ig Type

Rabbit IgG

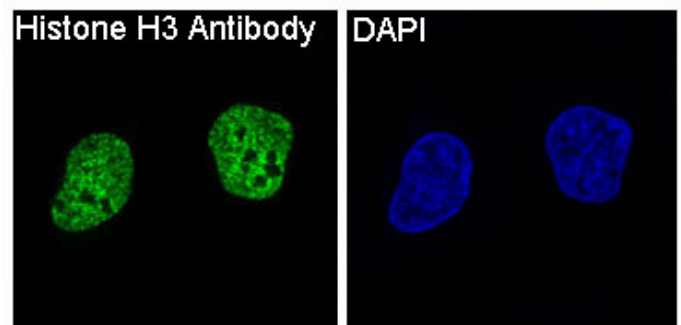
## Applications

WB, IHC-P, ICC/IF, ChIP

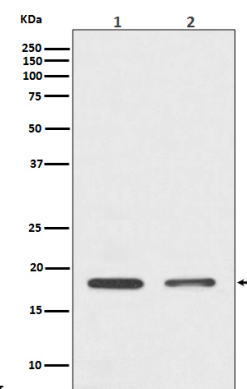
## Dilutions

WB: 1/1000-1/2000

IHC: 1/1000-1/2000



Immunofluorescent analysis of HeLa cells, using



Histone H3 Antibody.

Western blot analysis of Histone H3 expression in (1) HeLa cell lysate; (2) 3T3 cell lysate.