

Anti-PRTFDC1 antibody



Catalog Number: 106463

Product name

Anti-PRTFDC1 antibody

Immunogen

[Human PRTFDC1 \(His Tag\) recombinant protein](#)

Specificity

Human PRTFDC1

Antibody description

Rabbit polyclonal to PRTFDC1

Preparation

Produced in rabbits immunized with purified, recombinant Human PRTFDC1 (rh PRTFDC1; Q9NRG1-1; Met1-Val225). PRTFDC1 specific IgG was purified by Human PRTFDC1 affinity chromatography.

Formulation

0.2 μ m filtered solution in PBS

Storage

This antibody can be stored at 2°C-8°C for one month without detectable loss of activity. Antibody products are stable for twelve months from date of receipt when stored at -20°C to -80°C.

Preservative-Free.

Sodium azide is recommended to avoid contamination (final concentration 0.05%-0.1%). It is toxic to cells and should be disposed of properly. Avoid repeated freeze-thaw cycles.

Clonality

Polyclonal

Ig Type

Rabbit IgG

Applications

ELISA, WB

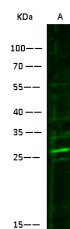
Dilutions

WB: 5-10 μ g/ml

ELISA:0.1-0.2 μ g/mL

This antibody can be used at 0.1-0.2 μ g/mL with the appropriate secondary reagents to detect Human PRTFDC1. The detection limit for Human PRTFDC1 is 0.00245 ng/well.

Validations



Items	Lanes	A
Sample (whole cell lysate)		HepG2
Sample volume (μ g/lane)		30
Gel		13% SDS-PAGE reducing gel
Recommended Concentration		5-10 μ g/ml
Secondary Antibody		Dylight 800-labeled Antibody To Rabbit IgG (H+), at 1:5000 dilution.

PRTFDC1 Antibody, Rabbit PAb, Antigen Affinity Purified, Western blot