

# SNRPE antibody



Catalog Number: 115463

## Product name

SNRPE antibody

## Immunogen

[Human SNRPE Recombinant protein \(GST tag\)](#)

## Specificity

Human, Mouse, Rat; other species not tested.

## Antibody description

SNRPE Rabbit Polyclonal antibody. Positive WB detected in human placenta tissue, human brain tissue. Positive IHC detected in human brain tissue, human hepat<sup>c</sup>irrhosis tissue. Observed molecular weight by Western-blot: 11kd

## Preparation

This antibody was obtained by immunization of SNRPE recombinant protein (Accession Number: NM\_003094). Purification method: Antigen affinity purified.

## Formulation

PBS with 0.02% sodium azide and 50% glycerol pH 7.3.

## Storage

Store at -20°C. DO NOT ALIQUOT

## Clonality

Polyclonal

## Ig Type

Rabbit IgG

## Applications

ELISA, IHC, WB

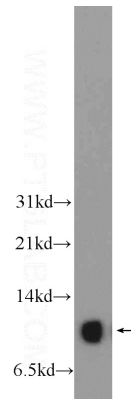
## Dilutions

Recommended Dilution:

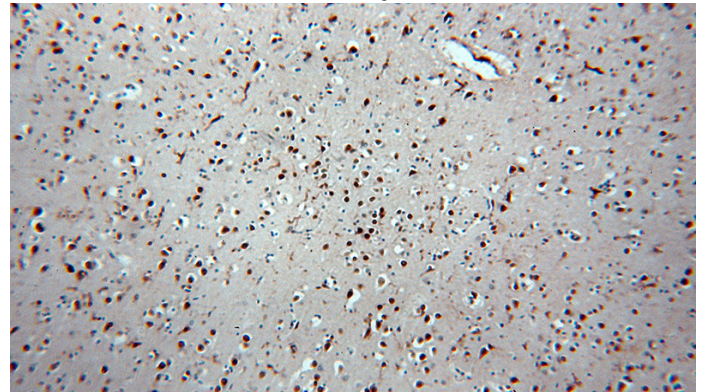
WB: 1:200-1:2000

IHC: 1:20-1:200

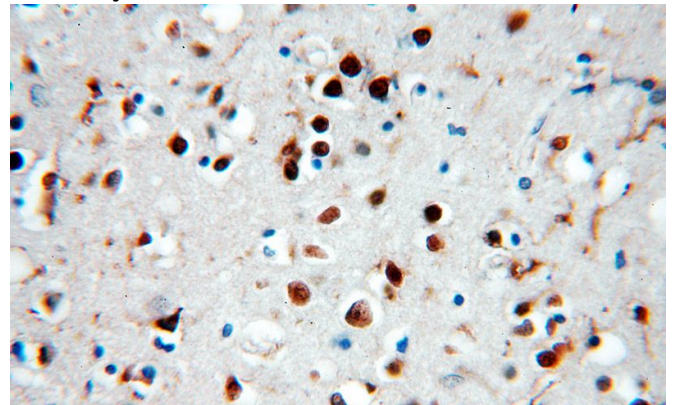
## Validations



human placenta tissue were subjected to SDS PAGE followed by western blot with Catalog No:115463(SNRPE Antibody) at dilution of 1:600



Immunohistochemical of paraffin-embedded human brain using Catalog No:115463(SNRPE antibody) at dilution of 1:50 (under 10x lens)



# SNRPE antibody



Catalog Number: 115463

---

Immunohistochemical of paraffin-embedded

human brain using Catalog No:115463(SNRPE antibody) at dilution of 1:50 (under 40x lens)