

# RAB9A antibody

Catalog Number: 114463

## Product name

RAB9A antibody

IHC: 1:20-1:200

IF: 1:50-1:500

## Specificity

Human, Mouse, Rat; other species not tested.

## Antibody description

RAB9A Rabbit Polyclonal antibody. Positive IF detected in HeLa cells. Positive IHC detected in human prostate cancer tissue, human spleen tissue. Positive WB detected in HeLa cells. Observed molecular weight by Western-blot: 23 kDa

## Preparation

This antibody was obtained by immunization of RAB9A recombinant protein (Accession Number: XM\_047442644). Purification method: Antigen affinity purified.

## Formulation

PBS with 0.1% sodium azide and 50% glycerol pH 7.3.

## Storage

Store at -20°C. DO NOT ALIQUOT

## Clonality

Polyclonal

## Ig Type

Rabbit IgG

## Applications

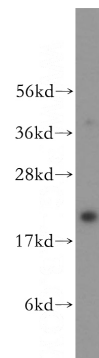
ELISA, WB, IHC, IF

## Dilutions

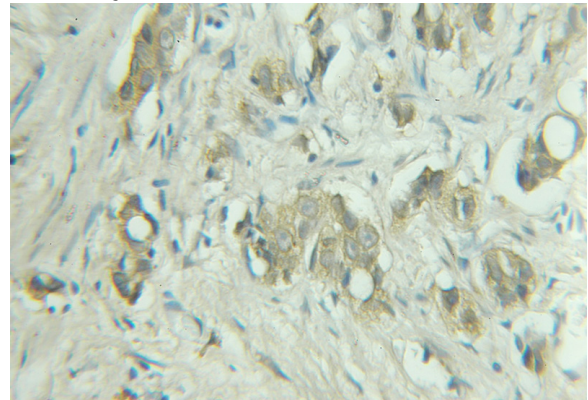
Recommended Dilution:

WB: 1:200-1:2000

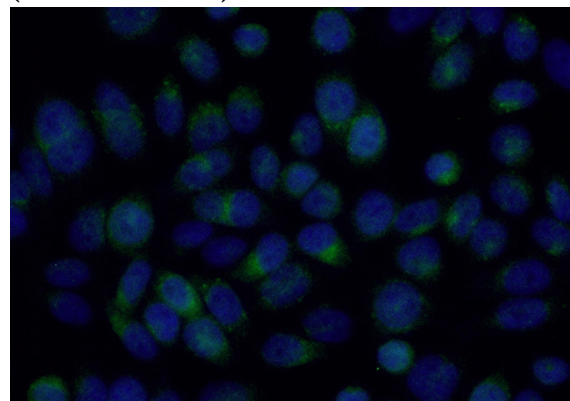
## Validations



HeLa cells were subjected to SDS PAGE followed by western blot with Catalog No:114463(RAB9A antibody) at dilution of 1:300



Immunohistochemical of paraffin-embedded human prostate cancer using Catalog No:114463(RAB9A antibody) at dilution of 1:50 (under 10x lens)



Immunofluorescent analysis of (10%

# RAB9A antibody



Catalog Number: 114463

---

Formaldehyde) fixed HeLa cells using Catalog  
No:114463(RAB9A Antibody) at dilution of 1:50

and Alexa Fluor 488-conjugated AffiniPure Goat  
Anti-Rabbit IgG(H+L)