

Anti-CD32b/Fc gamma RIIB/FCGR2B antibody



Catalog Number: 103463

Product name

Rabbit IgG

Anti-CD32b/Fc gamma RIIB/FCGR2B antibody

Applications

Immunogen

ELISA, IHC-P

[Rat CD32b/Fc gamma RIIB/FCGR2B \(His Tag\) recombinant protein](#)

Dilutions

ELISA: 0.1-0.2 µg/mL

Specificity

This antibody can be used at 0.1-0.2 µg/mL with the appropriate secondary reagents to detect Rat FCGR2B/CD32b. The detection limit for Rat FCGR2B/CD32b is approximately 0.00975 ng/well.

Rat CD32b / Fc gamma RIIB

IHC-P: 0.1-2 µg/mL

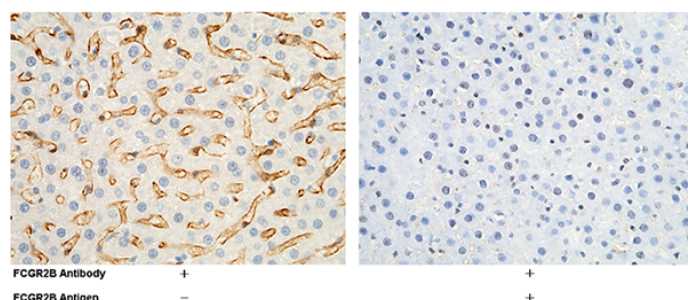
Antibody description

Rabbit polyclonal to CD32b/Fc gamma RIIB/FCGR2B

Validations

Preparation

Produced in rabbits immunized with purified, recombinant Rat CD32b / Fc gamma RIIB (rR CD32b / Fc gamma RIIB; Q63203-1; Met 1-Pro 212). CD32b / Fc gamma RIIB specific IgG was purified by Rat CD32b / Fc gamma RIIB affinity chromatography.



Formulation

CD32b / Fc gamma RIIB / FCGR2B Antibody, Rabbit PAb, Antigen Affinity Purified, Immunohistochemistry

0.2 µm filtered solution in PBS with 5% trehalose

Storage

Immunochemical staining of rat FCGR2B in rat liver with rabbit polyclonal antibody (1 µg/mL, formalin-fixed paraffin embedded sections). Positive staining was localized to hepatic sinusoid. The left panel: tissue incubated with primary antibody; The right panel: tissue incubated with the mixture of primary antibody and antigen (recombinant protein).

This antibody can be stored at 2°C-8°C for one month without detectable loss of activity. Antibody products are stable for twelve months from date of receipt when stored at -20°C to -80°C.

Preservative-Free.

Sodium azide is recommended to avoid contamination (final concentration 0.05%-0.1%). It is toxic to cells and should be disposed of properly. Avoid repeated freeze-thaw cycles.

Clonality

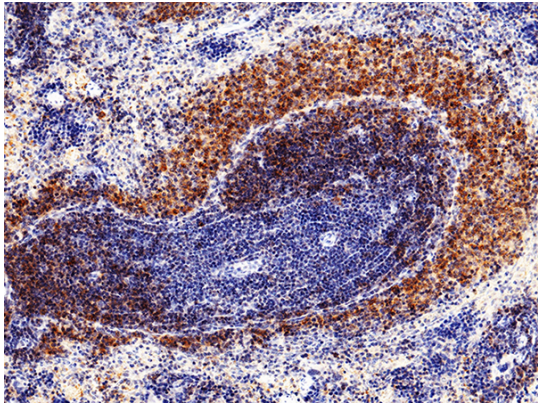
Polyclonal

Ig Type

Anti-CD32b/Fc gamma RIIB/FCGR2B antibody



Catalog Number: 103463



CD32b / Fc gamma RIIB / FCGR2B Antibody,
Rabbit PAb, Antigen Affinity Purified,
Immunohistochemistry

Immunochemical staining of human FCGR2B in
human kidney with rabbit polyclonal antibody (1
 $\mu\text{g}/\text{mL}$, formalin-fixed paraffin embedded
sections).