

# Mammaglobin A antibody



Catalog Number: 112463

## Product name

Mammaglobin A antibody

## Specificity

Human; other species not tested.

## Antibody description

Mammaglobin A Rabbit Polyclonal antibody. Positive WB detected in MCF-7 cells. Positive IHC detected in human breast cancer tissue. Observed molecular weight by Western-blot: 6-10 kDa

## Preparation

This antibody was obtained by immunization of Mammaglobin A recombinant protein (Accession Number: XM\_005274005). Purification method: Antigen Affinity purified.

## Formulation

PBS with 0.02% sodium azide and 50% glycerol pH 7.3.

## Storage

Store at -20°C. DO NOT ALIQUOT

## Clonality

Polyclonal

## Ig Type

Rabbit IgG

## Applications

ELISA, WB, IHC

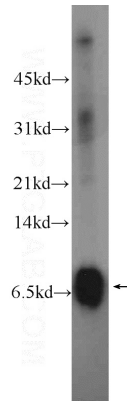
## Dilutions

Recommended Dilution:

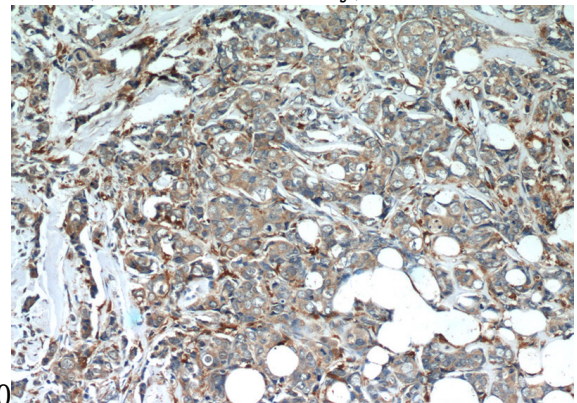
WB: 1:200-1:1000

IHC: 1:20-1:200

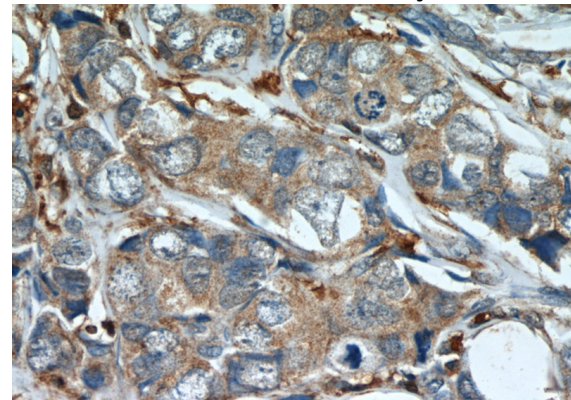
## Validations



MCF-7 cells were subjected to SDS PAGE followed by western blot with Catalog No:112463(SCGB2A2 Antibody) at dilution of



Immunohistochemistry of paraffin-embedded human breast cancer slide using Catalog No:112463(SCGB2A2 Antibody) at dilution of 1:50



Immunohistochemistry of paraffin-embedded human breast cancer slide using Catalog No:112463(SCGB2A2 Antibody) at dilution of 1:50