

Cynomolgus CD62L/L-Selectin/E-Selectin/CD62e/SELE (His Tag) recombinant protein



Catalog Number: 503063

General Information

Protein Construction

A DNA sequence encoding the cynomolgus SELE (G8F370) (Met1-Pro556) was expressed with a polyhistidine tag at the C-terminus.

Organism

Cynomolgus

Expression Host

Human Cells

QC Testing

Purity

> 95 % as determined by SDS-PAGE

Endotoxin

< 1.0 EU per μg of the protein as determined by the LAL method

Stability

Samples are stable for up to twelve months from date of receipt at -70°C

Predicted N terminal

Trp 22

Molecular Mass

The recombinant heterodimer of cynomolgus SELE comprises 546 amino acids and has a calculated molecular mass of 60.1 KDa. The apparent molecular mass of the protein is

approximately 90-100 KDa respectively in SDS-PAGE.

Formulation

Lyophilized from sterile PBS, pH 7.4.

1. 5 % trehalose and mannitol are added as protectants before lyophilization.

2. Please contact us for any concerns or special requirements.

Usage Guide

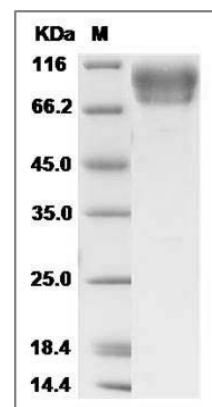
Storage

Store it under sterile conditions at -20°C to -80°C . It is recommended that the protein be aliquoted for optimal storage. Avoid repeated freeze-thaw cycles.

Reconstitution

Adding sterile water, prepare a stock solution of 0.25 mg/ml. Concentration is measured by UV-Vis.

SDS-PAGE



Cynomolgus E-Selectin / CD62e / SELE Protein (His Tag) SDS-PAGE