

# GPD2 antibody

Catalog Number: 111063

## Product name

GPD2 antibody

WB: 1:1000-1:10000

IP: 1:500-1:5000

## Specificity

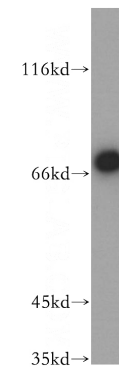
Human, Mouse, Rat; other species not tested.

IHC: 1:20-1:200

## Antibody description

GPD2 Rabbit Polyclonal antibody. Positive WB detected in mouse skeletal muscle tissue, mouse liver tissue, mouse pancreas tissue. Positive IP detected in mouse skeletal muscle tissue. Positive IHC detected in human testis tissue, human brain tissue, human spleen tissue. Observed molecular weight by Western-blot: 68 kDa

## Validations



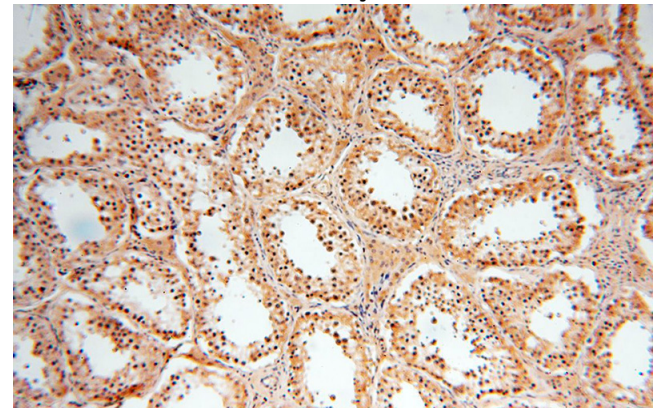
## Preparation

This antibody was obtained by immunization of GPD2 recombinant protein (Accession Number: BC019874). Purification method: Antigen affinity purified.

mouse skeletal muscle tissue were subjected to SDS PAGE followed by western blot with Catalog No:111063(GPD2 antibody) at dilution of 1:800

## Formulation

PBS with 0.02% sodium azide and 50% glycerol pH 7.3.



## Storage

Store at -20°C. DO NOT ALIQUOT

## Clonality

Polyclonal

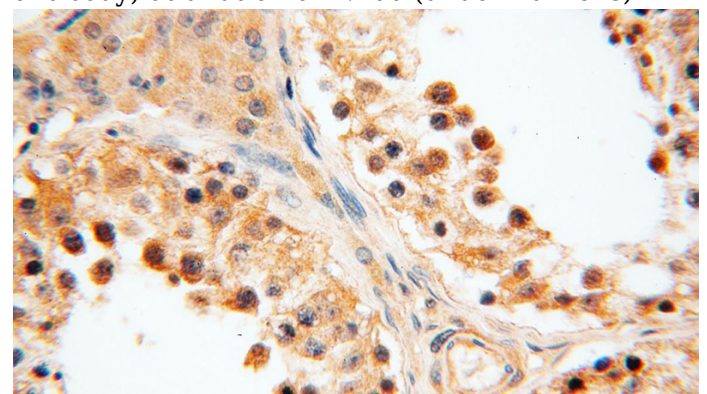
Immunohistochemical of paraffin-embedded human testis using Catalog No:111063(GPD2 antibody) at dilution of 1:100 (under 10x lens)

## Ig Type

Rabbit IgG

## Applications

ELISA, WB, IHC, IP



## Dilutions

Recommended Dilution:

# GPD2 antibody

Catalog Number: 111063

Immunohistochemical of paraffin-embedded human testis using Catalog No:111063(GPD2 antibody) at dilution of 1:100 (under 40x lens)

IP Result of anti-GPD2 (IP:Catalog No:111063, 3ug; Detection:Catalog No:111063 1:1000) with mouse skeletal muscle tissue lysate 3600ug.

