

# Anti-CCL3/Mip1a antibody



Catalog Number: 101063

## Product name

Anti-CCL3/Mip1a antibody

## Immunogen

[Rat CCL3/Mip1a recombinant protein](#)

## Specificity

Rat CCL3 / Mip1a

## Antibody description

Rabbit polyclonal to CCL3/Mip1a

## Preparation

Produced in rabbits immunized with purified, recombinant Rat CCL3 / Mip1a (rR CCL3 / Mip1a; P50229; Ala24-Ala92). CCL3 / Mip1a specific IgG was purified by Rat CCL3 / Mip1a affinity chromatography.

## Formulation

0.2 µm filtered solution in PBS

## Storage

This antibody can be stored at 2°C-8°C for one month without detectable loss of activity. Antibody products are stable for twelve months from date of receipt when stored at -20°C to -80°C. Preservative-Free.

Sodium azide is recommended to avoid contamination (final concentration 0.05%-0.1%). It is toxic to cells and should be disposed of properly. Avoid repeated freeze-thaw cycles.

## Clonality

Polyclonal

## Ig Type

Rabbit IgG

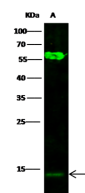
## Applications

WB

## Dilutions

WB: 5-20 µg/ml

## Validations



Items	Lanes	A
Sample (whole cell lysate)		293T
Sample Volume (µg/lane)		30
Gel		13% SDS-PAGE reducing gel
Recommended Concentration		10 µg/ml
Secondary Antibody		Dylight 800 labeled Antibody to Rabbit IgG (H+L), at 1:5000 dilution.
		Developed using Odyssey imaging system.
Explanation		Predicted band size: 11 kDa Observed band size: 11 kDa Additional bands at: 58 kDa (We are unsure as to the identity of these extra bands.)

CCL3 / Mip1a Antibody, Rabbit PAb, Antigen Affinity Purified, Western blot