

Mouse Ly108/SLAMF6 (His Tag) recombinant protein



Catalog Number: 500063

General Information

Gene Name Synonym

SLAM family member 6

Protein Construction

A DNA sequence encoding the mouse SLAMF6 (NP_109635.1) extracellular domain (Met 1-Asn 239) was fused with a polyhistidine tag at the C-terminus.

Organism

Mouse

Expression Host

Human Cells

QC Testing

Activity

Measured by its ability to bind biotinylated recombinant human SH2D1A in a functional ELISA.

Purity

> 95 % as determined by SDS-PAGE

Endotoxin

< 1.0 EU per μg of the protein as determined by the LAL method

Stability

Samples are stable for up to twelve months from date of receipt at -70°C

Predicted N terminal

Glu 31

Molecular Mass

The recombinant mouse SLAMF6 consists of 220 amino acids and has a predicted molecular mass of 24.4 kD. The apparent molecular mass of the rmSLAMF6 protein is approximately 40-45 kDa in SDS-PAGE under reducing conditions.

Formulation

- Lyophilized from sterile PBS, pH 7.4
1. 5 % trehalose and mannitol are added as protectants before lyophilization.
 2. Please contact us for any concerns or special requirements.

Usage Guide

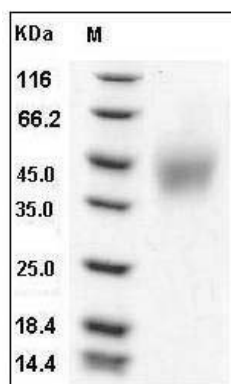
Storage

Store it under sterile conditions at -20°C to -80°C . It is recommended that the protein be aliquoted for optimal storage. Avoid repeated freeze-thaw cycles.

Reconstitution

Adding sterile water, prepare a stock solution of 0.25 mg/ml. Concentration is measured by UV-Vis.

SDS-PAGE



Mouse SLAMF6 / Ly108 Protein (His Tag) SDS-PAGE