

Anti-phospho-HSF1 (Ser303/Ser307) Rabbit antibody



Catalog Number: 167753

Product name

Anti-phospho-HSF1 (Ser303/Ser307) Rabbit antibody

Specificity

Human

Antibody description

phospho-HSF1 (Ser303/Ser307) Rabbit monoclonal antibody

Preparation

Antigen: A synthetic phosphopeptide corresponding to residues surrounding Ser303/Ser307 of human HSF1

Formulation

50nM Tris-Glycine(pH 7.4), 0.15M NaCl, 40%Glycerol, 0.01% sodium azide and 0.05% BSA

Storage

Store at 4°C short term. Store at -20°C long term. Avoid freeze / thaw cycle.

Clonality

Monoclonal

Ig Type

Rabbit IgG

Applications

WB, IHC-P, ICC/IF

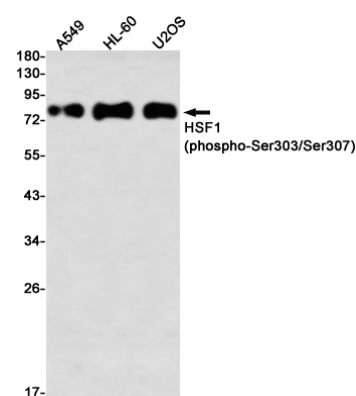
Dilutions

WB: 1/1000-1/5000

IHC: 1/50

ICC/IF: 1/50

Validations



Western blot detection of HSF1 (phospho-Ser303/Ser307) in A549,HL-60,U2OS using HSF1 (phospho-Ser303/Ser307) Rabbit mAb(1:1000 diluted)