

Anti-SEMA6A antibody



Catalog Number: 142753

Product name

Anti-SEMA6A antibody

Immunogen

[Human SEMA6A \(His Tag\) recombinant protein](#)

Specificity

Human SEMA6A

Antibody description

Rabbit Polyclonal to Human SEMA6A

Preparation

Produced in rabbits immunized with purified, recombinant Human SEMA6A . SEMA6A specific IgG was purified by Human SEMA6A affinity chromatography.

Formulation

0.2 µm filtered solution in PBS

Storage

This antibody can be stored at 2°C-8°C for one month without detectable loss of activity. Antibody products are stable for twelve months from date of receipt when stored at -20°C to -80°C. Preservative-Free.

Sodium azide is recommended to avoid contamination (final concentration 0.05%-0.1%). It is toxic to cells and should be disposed of properly. Avoid repeated freeze-thaw cycles.

Clonality

Polyclonal

Ig Type

Rabbit IgG

Applications

WB, ELISA, ICC/IF, IF

Dilutions

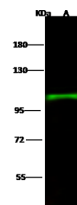
WB: 5-20 µg/ml

ELISA: 0.1-0.2 µg/mL

This antibody can be used at 0.1-0.2 µg/mL with the appropriate secondary reagents to detect Human SEMA6A.

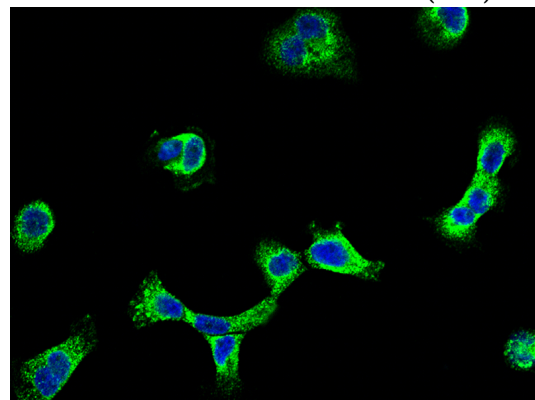
ICC/IF: 0.5-3µg/mL

Validations



Items	Lanes
Sample (whole cell lysate)	A
Sample Volume (µg/lane)	Raji 30
Gel	7.5% SDS-PAGE reducing gel
Recommended Concentration	5-20 µg/ml
Secondary Antibody	Dylight 800-labeled Antibody to Rabbit IgG (H+L), at 1:5000 dilution. Developed using Odyssey imaging system.
Explanation	Predicted band size : 114 kDa Observed band size : 107 kDa

Human SEMA6A Western blot (WB) 15819



Human SEMA6A Immunofluorescence(IF) 15820