

Anti-Cxcr3 antibody



Catalog Number: 175353

Product name

Anti-Cxcr3 antibody

Specificity

Human, Mouse, Rat, Dog, Pig, Cow, Rabbit, Guinea Pig

Antibody description

Rabbit polyclonal antibody to Cxcr3

Preparation

This antigen of this antibody was klh conjugated synthetic peptide derived from mouse cxcr3 301-367/367

Formulation

Liquid, 0.01M TBS(pH7.4) with 1% BSA, 0.03% Proclin300 and 50% Glycerol.

Storage

Store at -20°C for one year. Avoid repeated freeze/thaw cycles. The lyophilized antibody is stable at room temperature for at least one month and for greater than a year when kept at -20°C. When reconstituted in sterile pH 7.4 0.01M PBS or diluent of antibody the antibody is stable for at least two weeks at 2-4°C.

Clonality

Polyclonal

Ig Type

Rabbit IgG

Applications

WB, FC

Dilutions

WB:1:500-2000

FC:0.2µg /test

Validations

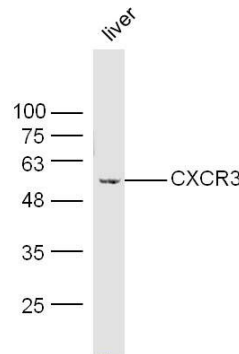
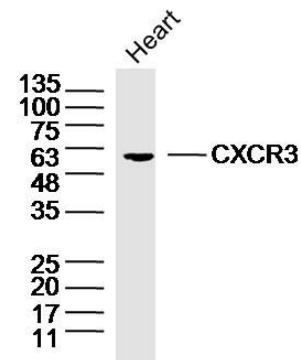
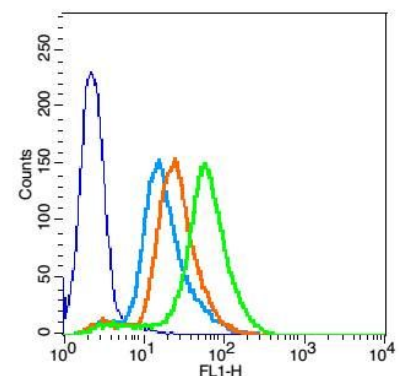


Fig1: Sample:; liver(mouse) Lysate at 40 ug; Primary: Anti-CXCR3 at 1/300 dilution; Secondary: IRDye800CW Goat Anti-Rabbit IgG at 1/20000 dilution; Predicted band size: 41kD; Observed



band size: 51kD

Fig2: Sample:; heart(mouse) Lysate at 40 ug; Primary: Anti-CXCR3 at 1/300 dilution; Secondary: IRDye800CW Goat Anti-Rabbit IgG at 1/20000 dilution; Predicted band size: 41kD; Observed



band size: 51kD

Fig3: Blank control: HCCLM3(blue); Isotype

Anti-Cxcr3 antibody



Catalog Number: 175353

Control Antibody: Rabbit IgG(orange) ; Secondary Antibody: Goat anti-rabbit IgG-FITC(white blue), Dilution: 1:100 in 1 X PBS containing 0.5% BSA ; Primary Antibody Dilution: 5ul in 100 uL1X PBS containing 0.5% BSA(green).

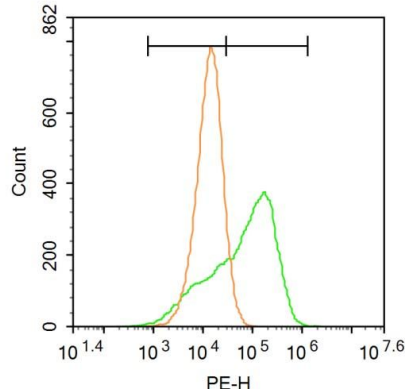


Fig4: Blank control: U937.; Primary Antibody (green line): Rabbit Anti-CXCR3 antibody ; Dilution: 1µg /10⁶ cells;; Isotype Control Antibody (orange line): Rabbit IgG .; Secondary Antibody : Goat anti-rabbit IgG-PE; Dilution: 1µg /test.; Protocol; The cells were incubated in 5%BSA to block non-specific protein-protein interactions for 30 min at room temperature .Cells stained with Primary Antibody for 30 min at room temperature. The secondary antibody used for 40 min at room temperature. Acquisition of 20,000 events was performed.