

# Anti-DC-SIGN/CD209 antibody



Catalog Number: 101353

## Product name

Anti-DC-SIGN/CD209 antibody

## Immunogen

[Human DC-SIGN/CD209 \(Fc Tag\) recombinant protein](#)

## Specificity

Human DC-SIGN / CD209

## Antibody description

Rabbit monoclonal to DC-SIGN/CD209

## Preparation

This antibody was obtained from a rabbit immunized with purified, recombinant Human DC-SIGN / CD209 (rh DC-SIGN / CD209; NP\_066978.1; Lys62-Ala404).

## Formulation

0.2 µm filtered solution in PBS with 5% trehalose

## Storage

This antibody can be stored at 2°C-8°C for one month without detectable loss of activity. Antibody products are stable for twelve months from date of receipt when stored at -20°C to -80°C.

Preservative-Free.

Sodium azide is recommended to avoid contamination (final concentration 0.05%-0.1%). It is toxic to cells and should be disposed of properly. Avoid repeated freeze-thaw cycles.

## Clonality

Monoclonal

## Ig Type

Rabbit IgG

## Applications

ELISA, WB

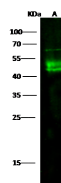
## Dilutions

WB: 5-10 µg/ml

ELISA: 0.1-0.2 µg/mL

This antibody can be used at 0.1-0.2 µg/mL with the appropriate secondary reagents to detect Human DC-SIGN / CD209. The detection limit for Human DC-SIGN / CD209 is approximately 0.00245 ng/well.

## Validations



Lanes	A
Sample (Membrane Lysate)	THP2
Sample Volume (µg/lane)	30
Gel	13% SDS-PAGE reducing gel
Recommended Concentration	5-10 µg/ml
Secondary Antibody	Dylight 800 labeled Antibody to Rabbit IgG (H+L), at 1:5000 dilution.
Explanation	Developed using Odyssey imaging system. Predicted band size : 46 kDa Observed band size : 46 kDa Additional bands at : 63 kDa and 17kDa (We are unsure as to the identity of these extra bands. They are possible non-specific bindings).

DC-SIGN / CD209 Antibody, Rabbit MAb, Western blot