

Human BCL2A1/BCL2L5/BFL1/GRS/HBPA1 (His tag) recombinant protein



Catalog Number: 519653

General Information

Gene Name Synonym

Bcl-2-Related Protein A1, Bcl-2-Like Protein 5, Bcl2-L-5, Hemopoietic-Specific Early Response Protein, Protein BFL-1, Protein GRS, BCL2A1, BCL2L5, BFL1, GRS, HBPA1

Protein Construction

A DNA sequence encoding the Human BCL2A1/BCL2L5/BFL1/GRS/HBPA1 Met1-Ser152 is expressed with a 6His tag at the C-terminus.

Organism

Human

Expression Host

E. coli

QC Testing

Purity

>95% as determined by SDS-PAGE.

Endotoxin

<1.0 EU per μ g protein as determined by the LAL

method.

Stability

Store for up to 6 months at -20°C

Formulation

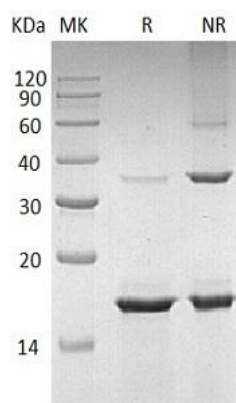
Supplied as a 0.2 μ m filtered solution of 20mM PB, 150mM NaCl, 1mM EDTA, 1mM DTT, 10% Glycerol, pH 7.4.

Usage Guide

Storage

Store at <-20°C, minimize freeze-thaw cycles.

SDS-PAGE



Human BCL2A1/BCL2L5/BFL1/GRS/HBPA1 (His tag) recombinant protein