

# C13orf30 antibody



Catalog Number: 108653

## Product name

C13orf30 antibody

## Specificity

Human; other species not tested.

## Antibody description

C13orf30 Rabbit Polyclonal antibody. Positive IHC detected in human kidney tissue. Positive IF detected in MDCK cells.

## Preparation

This antibody was obtained by immunization of C13orf30 recombinant protein (Accession Number: NM\_182508). Purification method: Antigen affinity purified.

## Formulation

PBS with 0.1% sodium azide and 50% glycerol pH 7.3.

## Storage

Store at -20°C. DO NOT ALIQUOT

## Clonality

Polyclonal

## Ig Type

Rabbit IgG

## Applications

ELISA, IF, IHC

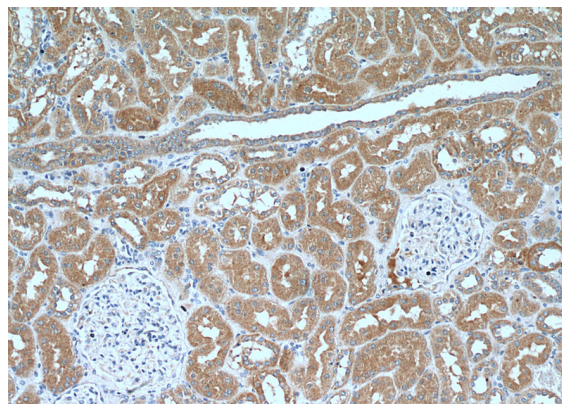
## Dilutions

Recommended Dilution:

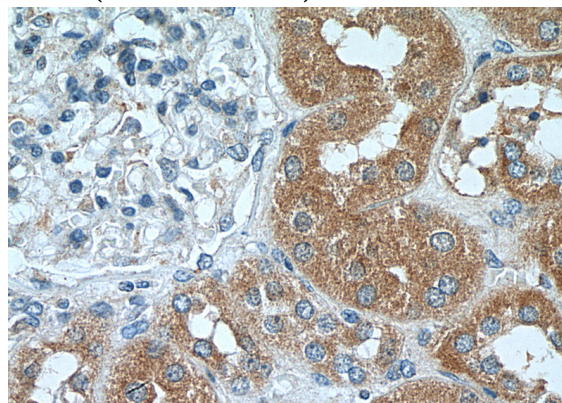
IHC: 1:50-1:500

IF: 1:10-1:100

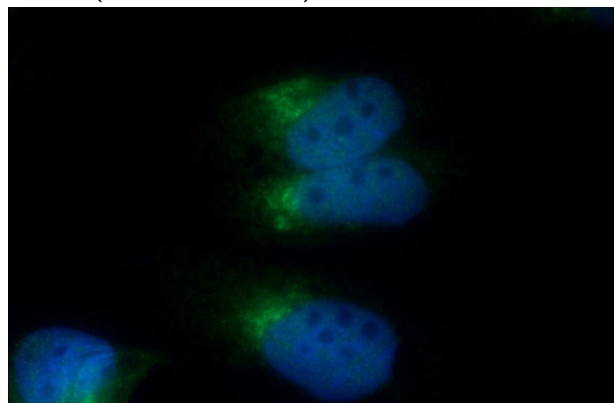
## Validations



Immunohistochemistry of paraffin-embedded human kidney tissue slide using Catalog No:108653(C13orf30 Antibody) at dilution of 1:200 (under 10x lens).



Immunohistochemistry of paraffin-embedded human kidney tissue slide using Catalog No:108653(C13orf30 Antibody) at dilution of 1:200 (under 40x lens).



Immunofluorescent analysis of MDCK cells using Catalog No:108653(C13orf30 Antibody) at dilution of 1:25 and Alexa Fluor 488-conjugated AffiniPure

# C13orf30 antibody



Catalog Number: 108653

---

Goat Anti-Rabbit IgG(H+L)