

Anti-KLF4 Rabbit antibody



Catalog Number: 167653

Product name

Anti-KLF4 Rabbit antibody

Specificity

Mouse, Rat

Antibody description

KLF4 Rabbit monoclonal antibody

Preparation

Antigen: Recombinant protein of mouse KLF4

Formulation

50nM Tris-Glycine(pH 7.4), 0.15M NaCl,
40%Glycerol, 0.01% sodium azide and 0.05% BSA

Storage

Store at 4°C short term. Store at -20°C long term.
Avoid freeze / thaw cycle.

Clonality

Monoclonal

Ig Type

Rabbit IgG

Applications

WB, IHC-P, ICC/IF, IP

Dilutions

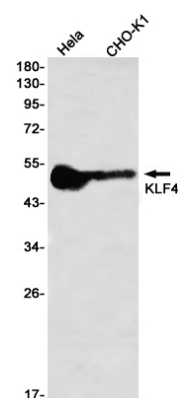
WB: 1/1000

IHC: 1/100

ICC/IF: 1/200

IP: 1/20

Validations



Western blot detection of KLF4 in HeLa,CHO-K1
using KLF4 Rabbit mAb(1:1000 diluted)