

Anti-SPARCL1 / SPARC-like 1 antibody



Catalog Number: 106653

Product name

Anti-SPARCL1 / SPARC-like 1 antibody

Specificity

Human SPARCL1

Antibody description

Rabbit monoclonal to SPARCL1 / SPARC-like 1

Preparation

This antibody was obtained from a rabbit immunized with purified, recombinant Human SPARCL1 (rh SPARCL1; NP_004675.3; Met 1-Phe 664) and conjugated with FITC under optimum conditions, the unreacted FITC was removed.

Formulation

Aqueous solution containing 0.5% BSA and 0.09% sodium azide

Storage

This antibody is stable for 12 months from date of receipt when stored at 2°C-8°C. Protected from prolonged exposure to light. Do not freeze ! Sodium azide is toxic to cells and should be disposed of properly. Flush with large volumes of water during disposal.

Clonality

Monoclonal

Ig Type

Rabbit IgG

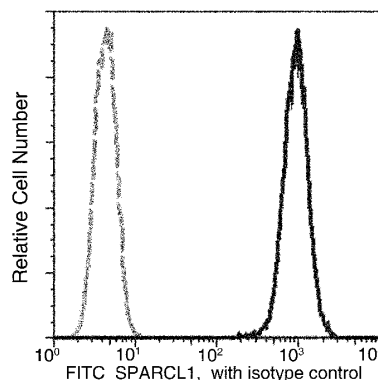
Applications

FCM

Dilutions

FCM

Validations



SPARCL1 Antibody (FITC), Rabbit MAb, Flow cytometric

Profile of anti-SPARCL1 reactivity on HL60 cells analyzed by flow cytometry.