

Anti-CD163 antibody



Catalog Number: 142653

Product name

Anti-CD163 antibody

Specificity

Human CD163

Antibody description

Rabbit Polyclonal to Human CD163

Preparation

Produced in rabbits immunized with a synthetic peptide corresponding to the C-terminus of the Human CD163, and purified by antigen affinity chromatography.

Formulation

0.2 µm filtered solution in PBS

Storage

This antibody can be stored at 2°C-8°C for one month without detectable loss of activity. Antibody products are stable for twelve months from date of receipt when stored at -20°C to -80°C.

Preservative-Free.

Sodium azide is recommended to avoid contamination (final concentration 0.05%-0.1%). It is toxic to cells and should be disposed of properly. Avoid repeated freeze-thaw cycles.

Clonality

Polyclonal

Ig Type

Rabbit IgG

Applications

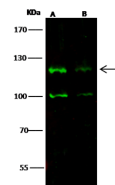
WB, IP

Dilutions

WB: 5-20 µg/ml

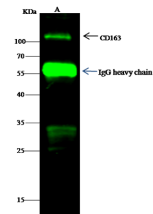
IP: 1-4 µg/mg of lysate

Validations



Lanes	A	B
Sample (whole cell lysate)	HEK293	K562
Sample Volume (µg/lane)	30	30
Gel	7.5% SDS-PAGE reducing gel	
Recommended Concentration	5-20 µg/ml	
Secondary Antibody	Dylight 800-labeled Antibody to Rabbit IgG (H+L), at 1:5000 dilution.	
Explanation	Developed using Odyssey imaging system. Predicted band size : 125 kDa Observed band size : 120 kDa Additional bands at : 100 kDa (We are unsure as to the identity of these extra bands.)	

CD163 Antibody, Rabbit PAB, Antigen Affinity



Items	Lanes	A
Sample (whole cell lysate)		K562
Sample quantity		0.5 mg
IP antibody quantity		4 µg
Immunomagnetic beads Protein G		60 µg
Gel		15% SDS-PAGE reducing gel
Primary antibody		KL11-SMCC-SIN0A4671/KL11-SMCC-SIN0A473 antibody at 1.0 µg/ml
Secondary antibody		Dylight 800-labeled antibody to rabbit IgG (H+L), at 1:5000 dilution

Purified, Western blot

CD163 Antibody, Rabbit PAb, Antigen Affinity

Purified, Immunoprecipitation