

IL1 beta antibody

Catalog Number: 111653

Product name

IL1 beta antibody

Specificity

Human, Mouse; other species not tested.

Antibody description

IL1 beta Rabbit Polyclonal antibody. Positive WB detected in A431 cells, human adrenal gland tissue, RAW 264.7 cells, Transfected HEK-293 cells. Positive IF detected in HeLa cells. Positive IHC detected in human skin tissue, human heart tissue, human lung tissue, human ovary tissue, human placenta tissue, human testis tissue, mouse heart tissue. Observed molecular weight by Western-blot: 30-35 kDa

Preparation

This antibody was obtained by immunization of IL1 beta recombinant protein (Accession Number: NM_000576). Purification method: Antigen affinity purified.

Formulation

PBS with 0.02% sodium azide and 50% glycerol pH 7.3.

Storage

Store at -20°C. DO NOT ALIQUOT

Clonality

Polyclonal

Ig Type

Rabbit IgG

Applications

ELISA, IHC, IF, WB

Dilutions

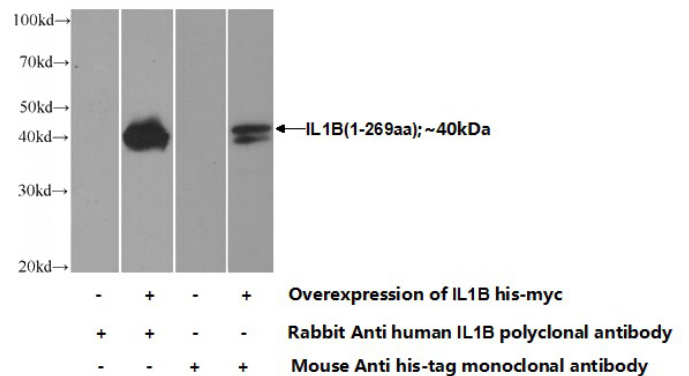
Recommended Dilution:

WB: 1:200-1:1000

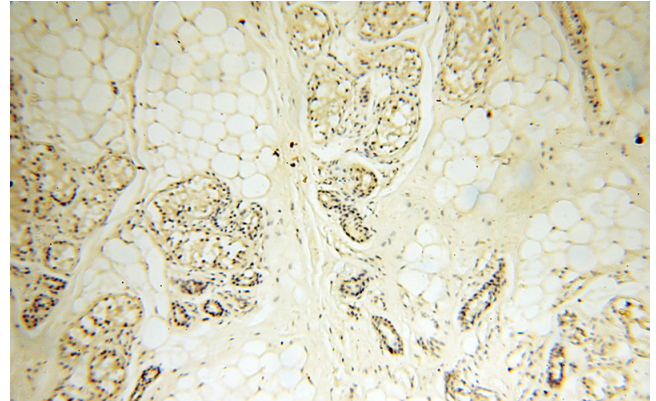
IHC: 1:20-1:200

IF: 1:20-1:200

Validations



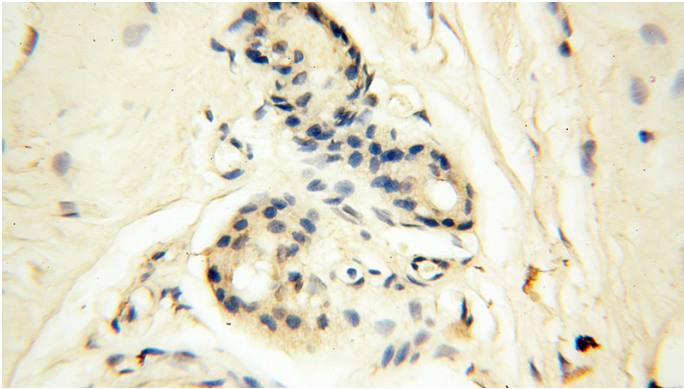
Transfected HEK-293 cells were subjected to SDS PAGE followed by western blot with Catalog No:111653(IL1B Antibody) at dilution of 1:700



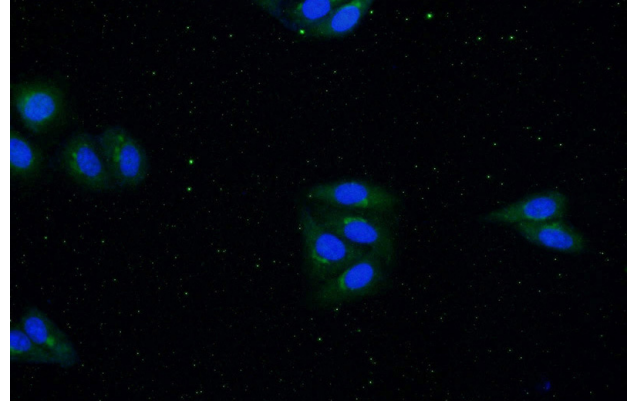
Immunohistochemical of paraffin-embedded human skin using Catalog No:111653(IL1B antibody) at dilution of 1:50 (under 10x lens)

IL1 beta antibody

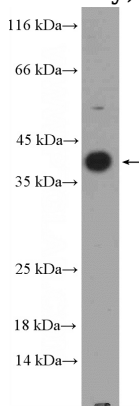
Catalog Number: 111653



A431 cells were subjected to SDS PAGE followed by western blot with Catalog No:111653(IL1B Antibody) at dilution of 1:300



Immunohistochemical of paraffin-embedded human skin using Catalog No:111653(IL1B antibody) at dilution of 1:50 (under 40x lens)



Immunofluorescent analysis of HeLa cells using Catalog No:111653(IL1B Antibody) at dilution of 1:50 and Alexa Fluor 488-conjugated AffiniPure Goat Anti-Rabbit IgG(H+L)