

PSPC1 antibody

Catalog Number: 114253

Product name

PSPC1 antibody

Specificity

Human, Mouse, Rat; other species not tested.

Antibody description

PSPC1 Rabbit Polyclonal antibody. Positive WB detected in PC-3 cells, HEK-293 cells, MCF-7 cells. Positive IP detected in HEK-293 cells. Observed molecular weight by Western-blot: 66 kDa

Preparation

This antibody was obtained by immunization of PSPC1 recombinant protein (Accession Number: NM_001363660). Purification method: Antigen affinity purified.

Formulation

PBS with 0.1% sodium azide and 50% glycerol pH 7.3.

Storage

Store at -20°C. DO NOT ALIQUOT

Clonality

Polyclonal

Ig Type

Rabbit IgG

Applications

ELISA, WB, IP

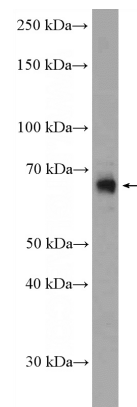
Dilutions

Recommended Dilution:

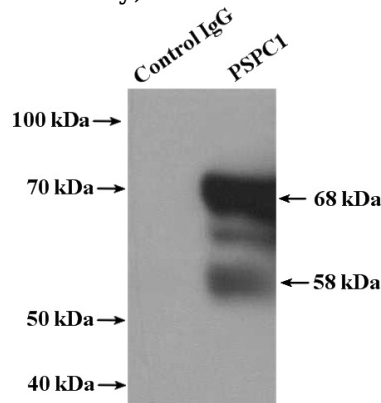
WB: 1:500-1:5000

IP: 1:500-1:5000

Validations



PC-3 cells were subjected to SDS PAGE followed by western blot with Catalog No:114253(PSPC1 Antibody) at dilution of 1:1000



IP Result of anti-PSPC1 (IP:Catalog No:114253, 4ug; Detection:Catalog No:114253 1:1000) with HEK-293 cells lysate 2800ug.