

# Anti-PSPH antibody



Catalog Number: 105953

## Product name

Anti-PSPH antibody

## Immunogen

[Human PSPH recombinant protein](#)

## Specificity

Human PSPH

## Antibody description

Rabbit polyclonal to PSPH

## Preparation

Produced in rabbits immunized with purified, recombinant Human PSPH (rh PSPH; P78330; Met1-Glu225). PSPH specific IgG was purified by Human PSPH affinity chromatography.

## Formulation

0.2  $\mu$ m filtered solution in PBS

## Storage

This antibody can be stored at 2°C-8°C for one month without detectable loss of activity. Antibody products are stable for twelve months from date of receipt when stored at -20°C to -80°C.

Preservative-Free.

Sodium azide is recommended to avoid contamination (final concentration 0.05%-0.1%). It is toxic to cells and should be disposed of properly. Avoid repeated freeze-thaw cycles.

## Clonality

Polyclonal

## Ig Type

Rabbit IgG

## Applications

ELISA, WB, IP

## Dilutions

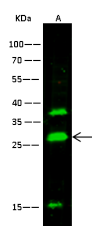
WB: 5-10  $\mu$ g/ml

ELISA: 0.1-0.2  $\mu$ g/mL

This antibody can be used at 0.1-0.2  $\mu$ g/mL with the appropriate secondary reagents to detect Human PSPH. The detection limit for Human PSPH is 0.00975 ng/well.

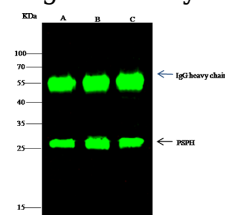
IP: 1-4  $\mu$ g/mg of lysate

## Validations



Lanes	A
Items	
Sample (whole cell lysate)	K562
Sample Volume ( $\mu$ g/lane)	30
Gel	13% SDS-PAGE reducing gel
Recommended concentration	5-10 $\mu$ g/ml
Secondary Antibody	Dylight 800-labeled Antibody To Rabbit IgG (H+L), at 1:5000 dilution.

## PSPH Antibody, Rabbit PAb, Antigen Affinity



Lanes	A	B	C
Items			
Sample (whole cell lysate)	K562	HepG2	MCF-7
Sample quantity	0.5 mg		
IP antibody quantity	2 $\mu$ g		
Protein G agarose	15 $\mu$ l of 50% Protein G Agarose		
Gel	13% SDS-PAGE reducing gel		
Primary antibody	PSPH antibody at 3 $\mu$ g/ml		
Secondary antibody	Dylight 800-labeled antibody to rabbit IgG (H+L), at 1:5000 dilution.		

## Purified, Western blot

PSPH Antibody, Rabbit PAb, Antigen Affinity  
Purified, Immunoprecipitation