

# GPLD1 Polyclonal Antibody

Catalog Number: 164953

## Product name

GPLD1 Polyclonal Antibody

## Specificity

Human, Mouse, Rat

## Antibody description

Polyclonal antibody to GPLD1

## Preparation

Antigen: Recombinant fusion protein containing a sequence corresponding to amino acids 24-160 of human GPLD1 (NP\_001494.2).

## Formulation

PBS with 0.02% sodium azide, 50% glycerol, pH7.3.

## Storage

Store at -20°C. Avoid freeze / thaw cycles.

## Clonality

Polyclonal

## Ig Type

Rabbit IgG

## Applications

WB, IHC, IF

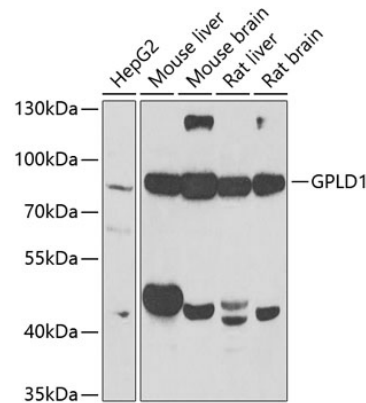
## Dilutions

WB 1:500 - 1:2000

IHC 1:50 - 1:100

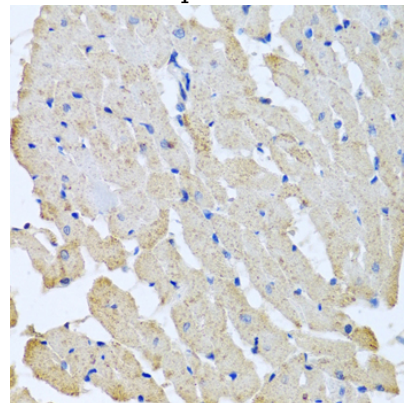
IF 1:50 - 1:100

## Validations



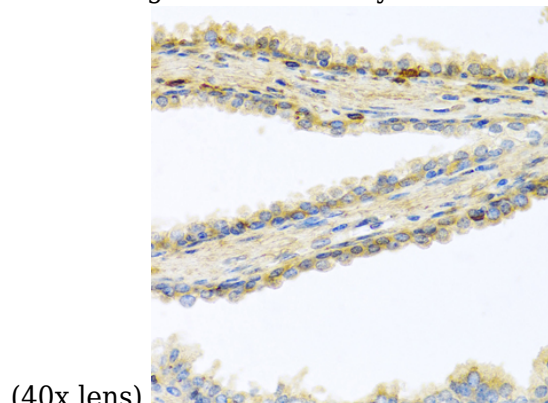
Western blot - GPLD1 Polyclonal Antibody

Western blot analysis of extracts of various cell lines, using GPLD1 antibody at 1:1000 dilution. Secondary antibody: HRP Goat Anti-Rabbit IgG (H+L) at 1:10000 dilution. Lysates/proteins: 25ug per lane. Blocking buffer: 3% nonfat dry milk in TBST. Detection: ECL Basic Kit. Exposure time: 90s.



Immunohistochemistry - GPLD1 Polyclonal Antibody

Immunohistochemistry of paraffin-embedded rat heart using GPLD1 antibody at dilution of 1:100



(40x lens).

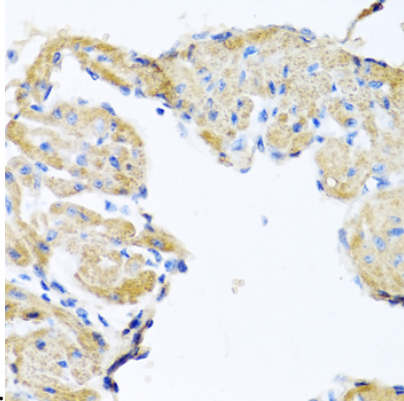
# GPLD1 Polyclonal Antibody

Catalog Number: 164953

---

Immunohistochemistry - GPLD1 Polyclonal Antibody

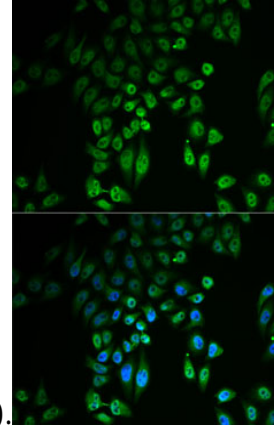
Immunohistochemistry of paraffin-embedded human prostate using GPLD1 antibody at dilution



of 1:100 (40x lens).

Immunohistochemistry - GPLD1 Polyclonal Antibody

Immunohistochemistry of paraffin-embedded mouse heart using GPLD1 antibody at dilution of



1:100 (40x lens).

Immunofluorescence - GPLD1 Polyclonal Antibody

Immunofluorescence analysis of U2OS cells using GPLD1 antibody . Blue: DAPI for nuclear staining.