

Anti-UBE2D3 Rabbit antibody



Catalog Number: 167553

Product name

Anti-UBE2D3 Rabbit antibody

Specificity

Human, Mouse, Rat

Antibody description

UBE2D3 Rabbit polyclonal antibody

Preparation

Antigen: A synthetic peptide of human UBE2D3

Formulation

Supplied in 50nM Tris-Glycine(pH 7.4), 0.15M NaCl, 40%Glycerol, 0.01% sodium azide and 0.05% BSA.

Storage

Store at -20°C. Stable for 12 months from date of receipt.

Clonality

Polyclonal

Ig Type

Rabbit IgG

Applications

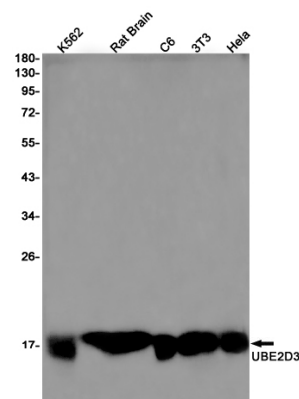
WB, IP

Dilutions

WB: 1/1000-1/5000

IP: 1/20

Validations



Western blot detection of UBE2D3 in K562, Rat Brain, C6, 3T3, HeLa cell lysates using UBE2D3 Rabbit pAb(1:1000 diluted). Predicted band size: 17kDa. Observed band size: 17kDa.