

RAPH1 antibody

Catalog Number: 114553

Product name

RAPH1 antibody

IHC: 1:20-1:200

IF: 1:10-1:100

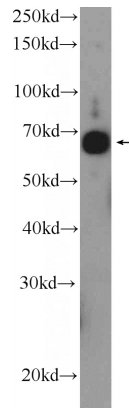
Specificity

Human; other species not tested.

Validations

Antibody description

RAPH1 Rabbit Polyclonal antibody. Positive IF detected in HepG2 cells. Positive IHC detected in human liver tissue, human ovary tissue. Positive WB detected in SKOV-3 cells, SH-SY5Y cells. Observed molecular weight by Western-blot: 67 kDa



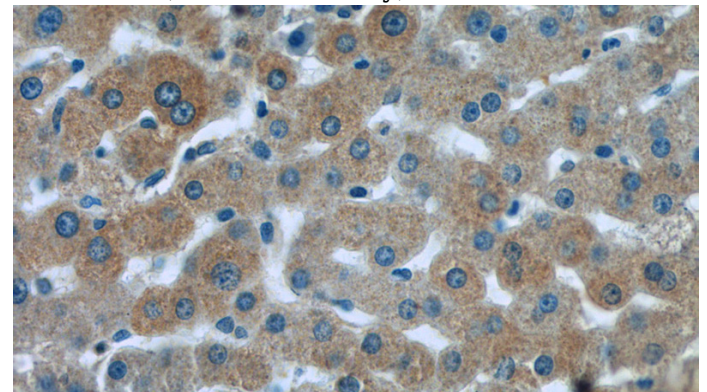
Preparation

This antibody was obtained by immunization of RAPH1 recombinant protein (Accession Number: XM_047445548). Purification method: Antigen affinity purified.

SKOV-3 cells were subjected to SDS PAGE followed by western blot with Catalog No:114553(RAPH1 Antibody) at dilution of 1:600

Formulation

PBS with 0.1% sodium azide and 50% glycerol pH 7.3.



Storage

Store at -20°C. DO NOT ALIQUOT

Clonality

Polyclonal

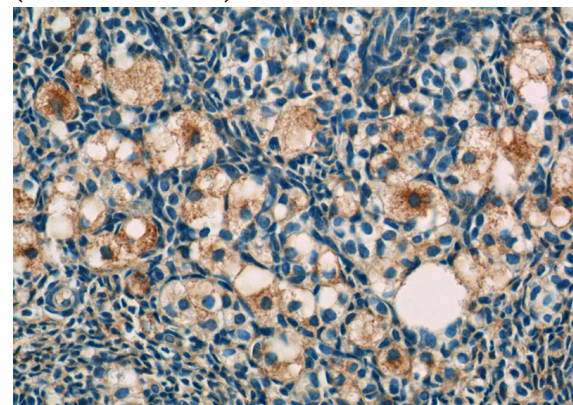
Immunohistochemistry of paraffin-embedded human liver tissue slide using Catalog No:114553(RAPH1 Antibody) at dilution of 1:50 (under 40x lens)

Ig Type

Rabbit IgG

Applications

ELISA, WB, IHC, IF



Dilutions

Recommended Dilution:

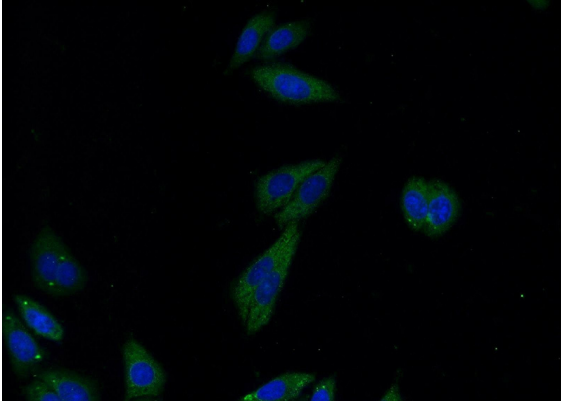
WB: 1:200-1:2000

Immunohistochemistry of paraffin-embedded

RAPH1 antibody

Catalog Number: 114553

human ovary tissue slide using Catalog No:114553(RAPH1 Antibody) at dilution of 1:50 (under 40x lens)



Immunofluorescent analysis of HepG2 cells using Catalog No:114553(RAPH1 Antibody) at dilution of 1:25 and Alexa Fluor 488-conjugated AffiniPure Goat Anti-Rabbit IgG(H+L)