

MCM3 antibody

Catalog Number: 112553

Product name

MCM3 antibody

Specificity

Human, Mouse, Rat; other species not tested.

Antibody description

MCM3 Rabbit Polyclonal antibody. Positive IP detected in HeLa cells. Positive WB detected in HeLa cells, K-562 cells. Observed molecular weight by Western-blot: 102-105 kDa

Preparation

This antibody was obtained by immunization of MCM3 recombinant protein (Accession Number: NM_002388). Purification method: Antigen affinity purified.

Formulation

PBS with 0.02% sodium azide and 50% glycerol pH 7.3.

Storage

Store at -20°C. DO NOT ALIQUOT

Clonality

Polyclonal

Ig Type

Rabbit IgG

Applications

ELISA, WB, IP

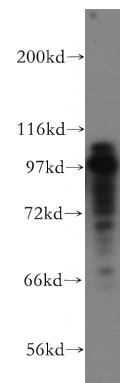
Dilutions

Recommended Dilution:

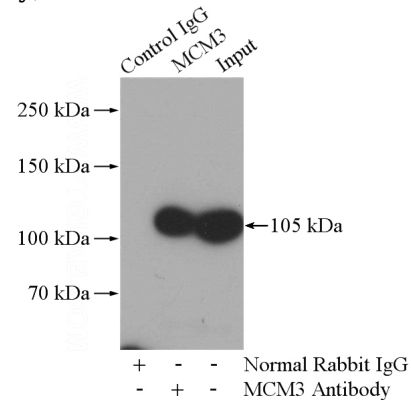
WB: 1:1000-1:10000

IP: 1:200-1:2000

Validations



HeLa cells were subjected to SDS PAGE followed by western blot with Catalog No:112553(MCM3 antibody) at dilution of 1:500



IP Result of anti-MCM3 (IP:Catalog No:112553, 4ug; Detection:Catalog No:112553 1:500) with HeLa cells lysate 1400ug.