

# ARMCX1 antibody



Catalog Number: 108153

## Product name

ARMCX1 antibody

## Specificity

Human, Mouse; other species not tested.

## Antibody description

ARMCX1 Rabbit Polyclonal antibody. Positive WB detected in mouse ovary tissue, mouse pancreas tissue. Observed molecular weight by Western-blot: 49-55 kDa

## Preparation

This antibody was obtained by immunization of ARMCX1 recombinant protein (Accession Number: NM\_016608). Purification method: Antigen affinity purified.

## Formulation

PBS with 0.1% sodium azide and 50% glycerol pH 7.3.

## Storage

Store at -20°C. DO NOT ALIQUOT

## Clonality

Polyclonal

## Ig Type

Rabbit IgG

## Applications

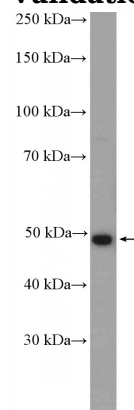
ELISA, WB

## Dilutions

Recommended Dilution:

WB: 1:200-1:1000

## Validations



mouse ovary tissue were subjected to SDS PAGE followed by western blot with Catalog No:108153(ARMCX1 Antibody) at dilution of 1:300