

Mouse NKG2A / NKG2 / CD159A / KLRC1 (His Tag) recombinant protein



Catalog Number: 502153

General Information

Protein Construction

A DNA sequence encoding the mouse Klrc1 (AAD24969.1) (Ala94-Ile244) was expressed with a polyhistidine tag at the N-terminus.

Organism

Mouse

Expression Host

Human Cells

QC Testing

Purity

> 95 % as determined by SDS-PAGE

Endotoxin

< 1.0 EU per μg of the protein as determined by the LAL method

Stability

Samples are stable for up to twelve months from date of receipt at -70°C

Predicted N terminal

His

Molecular Mass

The recombinant mouse Klrc1 consists of 171 amino acids and predicts a molecular mass of 19.6 KDa. It migrates as an approximately 33-40 KDa

band in SDS-PAGE under reducing conditions.

Formulation

Lyophilized from sterile PBS, pH 7.4.

1. 5 % trehalose and mannitol are added as protectants before lyophilization.

2. Please contact us for any concerns or special requirements.

Usage Guide

Storage

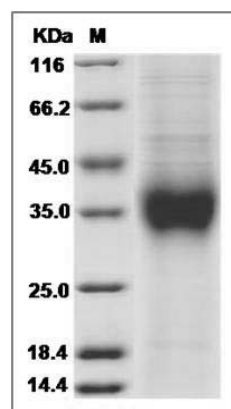
Store it under sterile conditions at -20°C to -80°C .

It is recommended that the protein be aliquoted for optimal storage. Avoid repeated freeze-thaw cycles.

Reconstitution

Adding sterile water, prepare a stock solution of 0.25 mg/ml. Concentration is measured by UV-Vis.

SDS-PAGE



Mouse NKG2A / NKG2 / CD159A / KLRC1 Protein (His Tag) SDS-PAGE