

Anti-RPA32/RPA2 Rabbit antibody



Catalog Number: 167853

Product name

Anti-RPA32/RPA2 Rabbit antibody

Specificity

Human

Antibody description

RPA32/RPA2 Rabbit monoclonal antibody

Preparation

Antigen: Recombinant protein of human RPA32/RPA2

Formulation

50nM Tris-Glycine(pH 7.4), 0.15M NaCl, 40%Glycerol, 0.01% sodium azide and 0.05% BSA

Storage

Store at 4°C short term. Store at -20°C long term. Avoid freeze / thaw cycle.

Clonality

Monoclonal

Ig Type

Rabbit IgG

Applications

WB, IHC-P, ICC/IF, FC, IP

Dilutions

WB: 1/1000

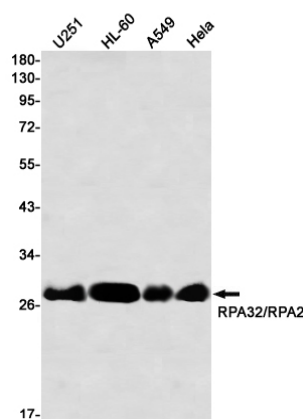
IHC: 1/500

ICC/IF: 1/20

FC: 1/50

IP: 1/20

Validations



Western blot detection of RPA32/RPA2 in U251,HL-60,A549,Hale using RPA32/RPA2 Rabbit mAb(1:1000 diluted)