

RSRC1 antibody

Catalog Number: 114853

Product name

RSRC1 antibody

Specificity

Human; other species not tested.

Antibody description

RSRC1 Rabbit Polyclonal antibody. Positive WB detected in HeLa cells, HepG2 cells. Positive IHC detected in human small intestine tissue, human liver cancer tissue. Observed molecular weight by Western-blot: 38 kDa; 50 kDa

Preparation

This antibody was obtained by immunization of RSRC1 recombinant protein (Accession Number: XM_047448275). Purification method: Antigen Affinity purified.

Formulation

PBS with 0.02% sodium azide and 50% glycerol pH 7.3.

Storage

Store at -20°C. DO NOT ALIQUOT

Clonality

Polyclonal

Ig Type

Rabbit IgG

Applications

ELISA, WB, IHC

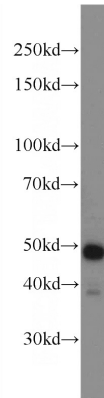
Dilutions

Recommended Dilution:

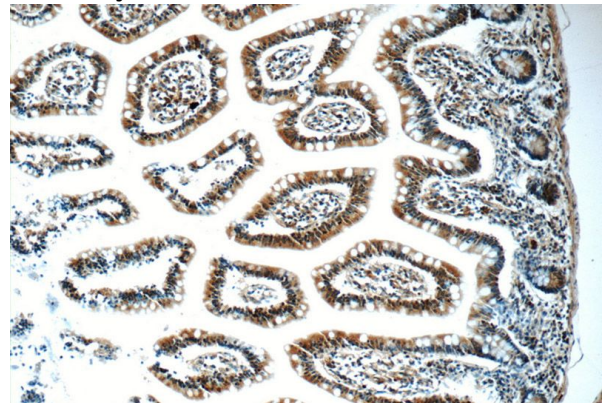
WB: 1:500-1:5000

IHC: 1:20-1:200

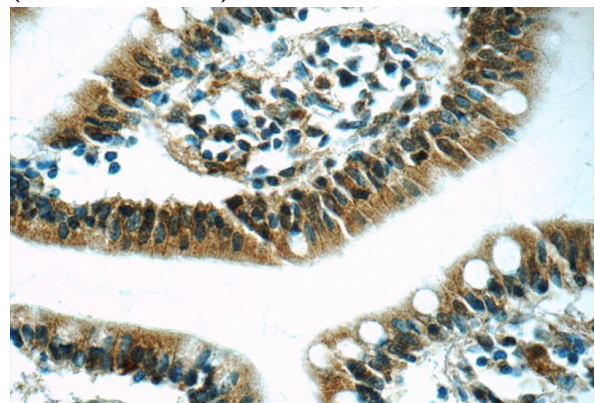
Validations



HeLa cells were subjected to SDS PAGE followed by western blot with Catalog No:114853(RSRC1 Antibody) at dilution of 1:1500



Immunohistochemistry of paraffin-embedded human small intestine tissue slide using Catalog No:114853(RSRC1 Antibody) at dilution of 1:50 (under 10x lens)



Immunohistochemistry of paraffin-embedded human small intestine tissue slide using Catalog No:114853(RSRC1 Antibody) at dilution of 1:50 (under 10x lens)

RSRC1 antibody



Catalog Number: 114853

No:114853(RSRC1 Antibody) at dilution of 1:50 (under 40x lens)