

Anti-LCN1/Lipocalin 1 antibody



Catalog Number: 102853

Product name

Anti-LCN1/Lipocalin 1 antibody

Immunogen

[Human LCN1/Lipocalin 1 \(His Tag\) recombinant protein](#)

Specificity

Human LCN1 / Lipocalin-1 / VEGP

Antibody description

Rabbit polyclonal to LCN1/Lipocalin 1

Preparation

Produced in rabbits immunized with purified, recombinant Human LCN1 (rh LCN1; NP_002288.1; Met 1-Asp176). LCN1 specific IgG was purified by human LCN1 affinity chromatography.

Formulation

0.2 µm filtered solution in PBS with 5% trehalose

Storage

This antibody can be stored at 2°C-8°C for one month without detectable loss of activity. Antibody products are stable for twelve months from date of receipt when stored at -20°C to -80°C.

Preservative-Free.

Sodium azide is recommended to avoid contamination (final concentration 0.05%-0.1%). It is toxic to cells and should be disposed of

properly. Avoid repeated freeze-thaw cycles.

Clonality

Polyclonal

Ig Type

Rabbit IgG

Applications

ELISA, WB

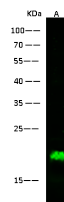
Dilutions

WB: 5-10 µg/mL

ELISA: 0.1-0.2 µg/mL

This antibody can be used at 0.1-0.2 µg/mL with the appropriate secondary reagents to detect Human LCN1. The detection limit for Human LCN1 is 0.00975 ng/well.

Validations



Items	Lanes
Sample (whole cell lysate)	A
Sample Volume (µg/lane)	HepG2
Gel	30
Recommended Concentration	13% SDS-PAGE reducing gel
Secondary Antibody	5-10 µg/ml
Antibody	Dylight 800-labeled Antibody To Rabbit IgG (H+L), at 1:5000 dilution
Explanation	Developed using Odyssey imaging system.
	Predicted band size : 19 kDa
	Observed band size : 19 kDa

LCN1 / Lipocalin-1 / VEGP Antibody, Rabbit PAb, Antigen Affinity Purified, Western blot