

# Anti-CDX2 antibody



Catalog Number: 101853

## Product name

Anti-CDX2 antibody

## Specificity

Human CDX2

## Antibody description

Rabbit polyclonal to CDX2

## Preparation

Produced in rabbits immunized with a synthetic peptide corresponding to the center region of the Human CDX2, and purified by antigen affinity chromatography.

## Formulation

0.2 µm filtered solution in PBS

## Storage

This antibody can be stored at 2°C-8°C for one month without detectable loss of activity. Antibody products are stable for twelve months from date of receipt when stored at -20°C to -80°C.

Preservative-Free.

Sodium azide is recommended to avoid contamination (final concentration 0.05%-0.1%). It is toxic to cells and should be disposed of

properly. Avoid repeated freeze-thaw cycles.

## Clonality

Polyclonal

## Ig Type

Rabbit IgG

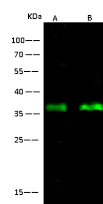
## Applications

WB

## Dilutions

WB: 5-10 µg/ml

## Validations



Items	Lanes	A	B
Sample [whole cell lysate]		HEK293	HT-29
Sample Volume (µg/lane)		30	30
Gel		13% SDS-PAGE reducing gel	
Recommended concentration		5-10 µg/ml	
Secondary Antibody		Dylight 800-labeled Antibody to Rabbit IgG (H+L), at 1:5000 dilution	
Developed using Odyssey imaging system.			
Explanation		Predicted band size : 34 kDa Observed band size : 37 kDa	

CDX2 Antibody, Rabbit PAb, Antigen Affinity Purified, Western blot