

# SNIP1 antibody

Catalog Number: 115453

## Product name

SNIP1 antibody

## Specificity

Human, Mouse, Rat; other species not tested.

## Antibody description

SNIP1 Rabbit Polyclonal antibody. Positive WB detected in HeLa cells. Positive IP detected in HeLa cells. Observed molecular weight by Western-blot: 46-50 kDa

## Preparation

This antibody was obtained by immunization of SNIP1 recombinant protein (Accession Number: NM\_024700). Purification method: Antigen affinity purified.

## Formulation

PBS with 0.02% sodium azide and 50% glycerol pH 7.3.

## Storage

Store at -20°C. DO NOT ALIQUOT

## Clonality

Polyclonal

## Ig Type

Rabbit IgG

## Applications

ELISA, WB, IP

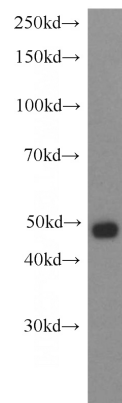
## Dilutions

Recommended Dilution:

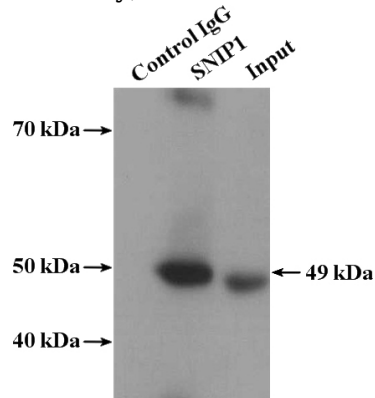
WB: 1:500-1:5000

IP: 1:500-1:5000

## Validations



HeLa cells were subjected to SDS PAGE followed by western blot with Catalog No:115453(SNIP1 antibody) at dilution of 1:1500



IP Result of anti-SNIP1 (IP:Catalog No:115453, 4ug; Detection:Catalog No:115453 1:1000) with HeLa cells lysate 2400ug.