

Anti-Ki67 / MKI67 antibody



Catalog Number: 106053

Product name

Anti-Ki67 / MKI67 antibody

Immunogen

[Human Ki67 / MKI67 \(GST Tag\) recombinant protein](#)

Specificity

Human MKI67

Antibody description

Mouse monoclonal to Ki67 / MKI67

Preparation

This antibody was produced from a hybridoma resulting from the fusion of a mouse myeloma with B cells obtained from a mouse immunized with purified, recombinant Human MKI67 (rh MKI67; P46013-2; Met1-Pro120). The IgG fraction of the cell culture supernatant was purified by Protein A affinity chromatography.

Formulation

0.2 µm filtered solution in PBS with 5% trehalose

Storage

This antibody can be stored at 2°C-8°C for one month without detectable loss of activity. Antibody products are stable for twelve months from date of receipt when stored at -20°C to -80°C.

Preservative-Free.

Sodium azide is recommended to avoid contamination (final concentration 0.05%-0.1%). It is toxic to cells and should be disposed of properly. Avoid repeated freeze-thaw cycles.

Clonality

Monoclonal

Ig Type

Mouse IgG1

Applications

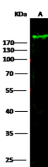
WB, IF, ICC/IF

Dilutions

WB: 5-10 µg/mL

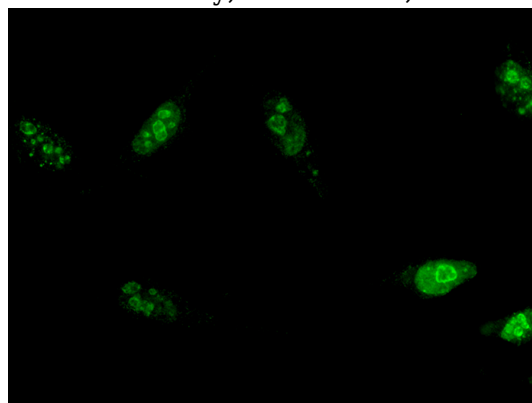
ICC/IF: 10-25 µg/mL

Validations



Items	Lanes	A
Sample (whole cell lysate)		8562
Sample Volume (µg/lane)		30
Gel		13% SDS-PAGE reducing gel
Recommended Concentration		5-10 µg/ml
Secondary Antibody		Dylight 800 labeled Antibody To Mouse IgG (H+), at 1:7500 dilution.
Developed using Odyssey imaging system.		
Explanation		Predicted band size: 358 kDa Observed band size: 250 kDa

MKI67 Antibody, Mouse MAb, Western blot



MKI67 Antibody, Mouse MAb, Immunohistochemistry

Immunofluorescence staining of Human MKI67 in Hela cells. Cells were fixed with 4% PFA, permeabilized with 0.3% Triton X-100 in PBS, blocked with 10% serum, and incubated with mouse anti-Human MKI67 monoclonal antibody (15 µg/ml) at 37°C 1 hour. Then cells were stained with the Alexa Fluor® 488-conjugated Goat Anti-

Anti-Ki67 / MKI67 antibody



Catalog Number: 106053

mouse IgG secondary antibody (green) and

counterstained with DAPI (blue). Positive staining was localized to nucleus.