

# CD31 Polyclonal Antibody



Catalog Number: 164053

## Product name

CD31 Polyclonal Antibody

## Specificity

Human, Mouse, Rat

## Antibody description

Polyclonal antibody to CD31

## Preparation

Antigen: A synthetic peptide corresponding to a sequence within amino acids 600 to the C-terminus of mouse CD31 (NP\_001292086.1).

## Formulation

PBS with 0.02% sodium azide, 50% glycerol, pH7.3.

## Storage

Store at -20°C. Avoid freeze / thaw cycles.

## Clonality

Polyclonal

## Ig Type

Rabbit IgG

## Applications

WB, IHC, IF, IP

## Dilutions

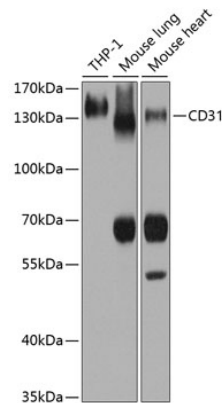
WB 1:500 - 1:2000

IHC 1:50 - 1:200

IF 1:50 - 1:200

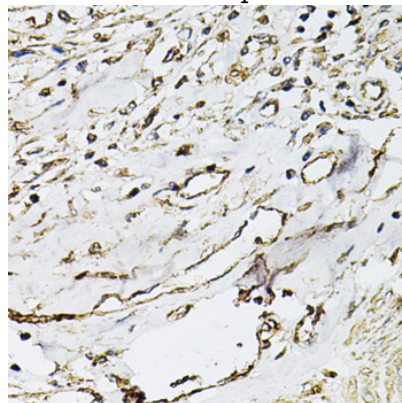
IP 1:50 - 1:200

## Validations



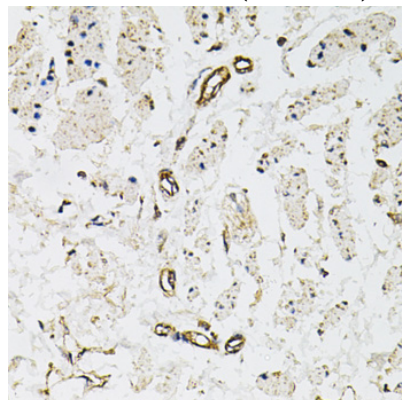
Western blot - CD31 Polyclonal Antibody

Western blot analysis of extracts of various cell lines, using CD31 antibody at 1:1000 dilution. Secondary antibody: HRP Goat Anti-Rabbit IgG (H+L) at 1:10000 dilution. Lysates/proteins: 25ug per lane. Blocking buffer: 3% nonfat dry milk in TBST. Detection: ECL Enhanced Kit. Exposure time: 3s.



Immunohistochemistry - CD31 Polyclonal Antibody

Immunohistochemistry of paraffin-embedded human prostate cancer using CD31 antibody at dilution of 1:100 (40x lens).



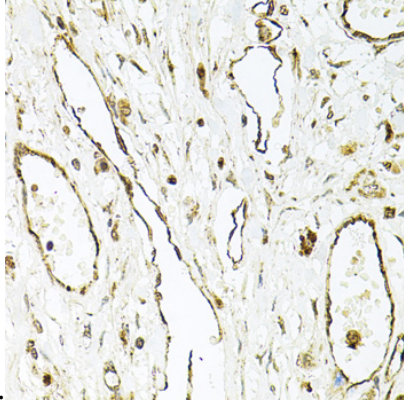
# CD31 Polyclonal Antibody

Catalog Number: 164053

---

Immunohistochemistry - CD31 Polyclonal Antibody

Immunohistochemistry of paraffin-embedded human esophagus using CD31 antibody at dilution

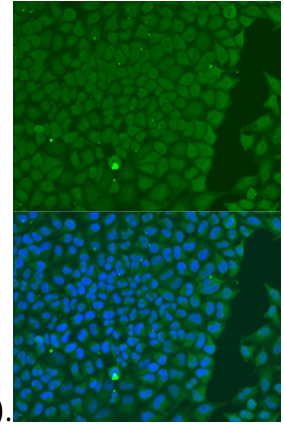


of 1:100 (40x lens).

Immunohistochemistry - CD31 Polyclonal Antibody

Immunohistochemistry of paraffin-embedded

human gastric cancer using CD31 antibody at



dilution of 1:100 (40x lens).

Immunofluorescence - CD31 Polyclonal Antibody

Immunofluorescence analysis of U2OS cells using CD31 antibody at dilution of 1:100. Blue: DAPI for nuclear staining.