

# KIFC1 antibody



Catalog Number: 112053

## Product name

KIFC1 antibody

IHC: 1:20-1:200

IF: 1:10-1:100

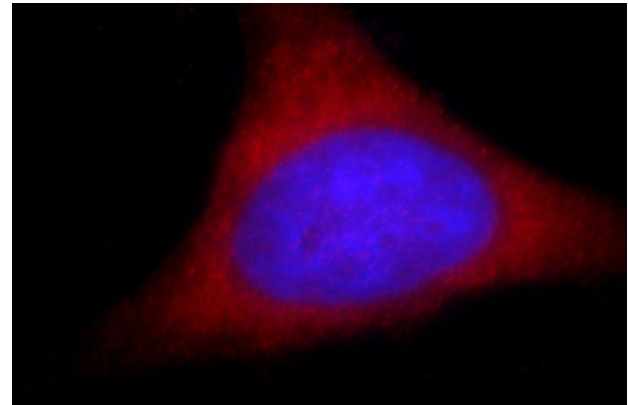
## Specificity

Human, Mouse, Rat; other species not tested.

## Validations

## Antibody description

KIFC1 Rabbit Polyclonal antibody. Positive IHC detected in human testis tissue. Positive IF detected in HeLa cells, HepG2 cells. Positive WB detected in rat testis tissue, HeLa cells, mouse testis tissue, NIH/3T3 cells. Observed molecular weight by Western-blot: 55-70 kDa



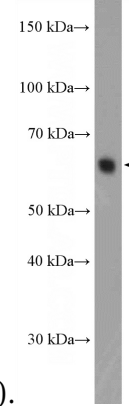
## Preparation

This antibody was obtained by immunization of KIFC1 recombinant protein (Accession Number: BC000712). Purification method: Antigen affinity purified.

Immunofluorescent analysis of HeLa cells, using KIFC1 antibody Catalog No:112053 at 1:25 dilution and Rhodamine-labeled goat anti-rabbit IgG (red). Blue pseudocolor = DAPI (fluorescent

## Formulation

PBS with 0.02% sodium azide and 50% glycerol pH 7.3.

DNA dye).  


150 kDa →  
100 kDa →  
70 kDa →  
50 kDa →  
40 kDa →  
30 kDa →

## Storage

Store at -20°C. DO NOT ALIQUOT

## Clonality

Polyclonal

## Ig Type

Rabbit IgG

## Applications

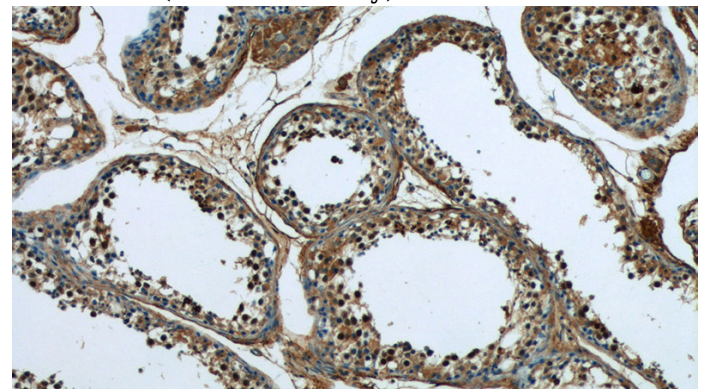
ELISA, IF, IHC, WB

## Dilutions

Recommended Dilution:

WB: 1:200-1:2000

rat testis tissue were subjected to SDS PAGE followed by western blot with Catalog No:112053(KIFC1 Antibody) at dilution of 1:600



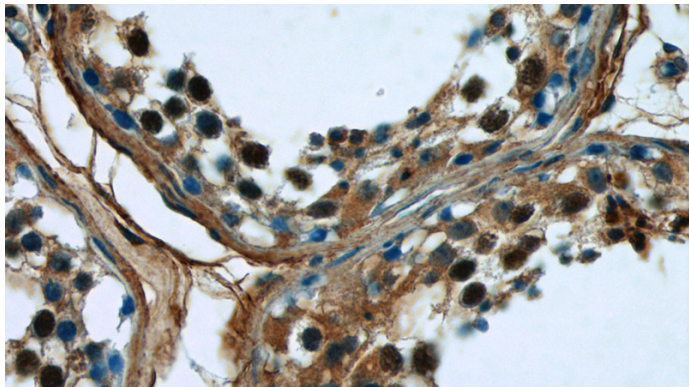
Immunohistochemistry of paraffin-embedded

# KIFC1 antibody

Catalog Number: 112053

---

human testis tissue slide using Catalog  
No:112053(KIFC1 Antibody) at dilution of 1:50  
(under 10x lens)



Immunohistochemistry of paraffin-embedded  
human testis tissue slide using Catalog  
No:112053(KIFC1 Antibody) at dilution of 1:50  
(under 40x lens)