

gp210 antibody



Catalog Number: 111053

Product name

gp210 antibody

Specificity

Human, Mouse, Rat; other species not tested.

Antibody description

gp210 Rabbit Polyclonal antibody. Positive WB detected in mouse lung tissue, MCF7 cells, mouse thymus tissue. Observed molecular weight by Western-blot: 205kd

Preparation

This antibody was obtained by immunization of gp210 recombinant protein (Accession Number: BC067089). Purification method: Antigen affinity purified.

Formulation

PBS with 0.02% sodium azide and 50% glycerol pH 7.3.

Storage

Store at -20°C. DO NOT ALIQUOT

Clonality

Polyclonal

Ig Type

Rabbit IgG

Applications

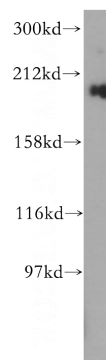
ELISA, WB

Dilutions

Recommended Dilution:

WB: 1:500-1:5000

Validations



mouse lung tissue were subjected to SDS PAGE followed by western blot with Catalog No:111053(NUP210 antibody) at dilution of 1:300